

# TRUCKEE DONNER LAND TRUST

---

*The Truckee Donner Land Trust preserves and protects scenic, historic, and recreational lands with high natural resource values in the greater Truckee Donner region, and manages recreational activities on these lands in a sustainable manner.*



Summer Newsletter 2016  
Volume 47

*Updates on:  
Carpenter Valley; page 3  
Van Norden Dam; page 6  
Black Wall; page 8  
A Thank You to our Donors;  
page 12*

# FROM THE BOARD PRESIDENT

*Dear Friends,*

This year is already proving to be a watershed year in the 25-year history of the Land Trust. We are in the midst of yet another high-profile campaign at Carpenter Valley that will result in the permanent conservation of over 1,320 acres immediately contiguous to Tahoe Donner. This acquisition will open up beautiful and pristine land for recreation and restoration that was not previously accessible to the public despite being immediately adjacent to a huge segment of our population. Like campaigns before them, including Royal Gorge, Waddle Ranch Preserve, and Webber Lake, these large scale acquisitions are dependent upon the engagement of the local community to ensure not only the acquisition of the land, but its long term care.

Additionally, as we continue to have remarkable success in conservation throughout the region, the Land Trust finds itself as the steward of tens of thousands of acres throughout the region that have been preserved from development, and must immediately be monitored and cared for. We are in the process of establishing long-term management and funding plans that will help us restore and preserve the quality of the land for future generations. However, the annual giving and membership program are critical to sustaining the Land Trust and meeting our operational and stewardship commitments.

While these initiatives are ambitious, the organization remains focused on pursuing other conservation projects aligned with our mission throughout the region as opportunities arise. We are not risk-averse in wading into challenging or competitive acquisitions. The Board will continue to direct staff to aggressively seek to conserve land in perpetuity that enhances the environment and our enjoyment of this great area.

The Land Trust is run by a staff of remarkable and talented individuals who share a passion for our mission. While still a lean and nimble team, the staff has grown and evolved in recent months to ensure that every opportunity is handled with skill and care. Our



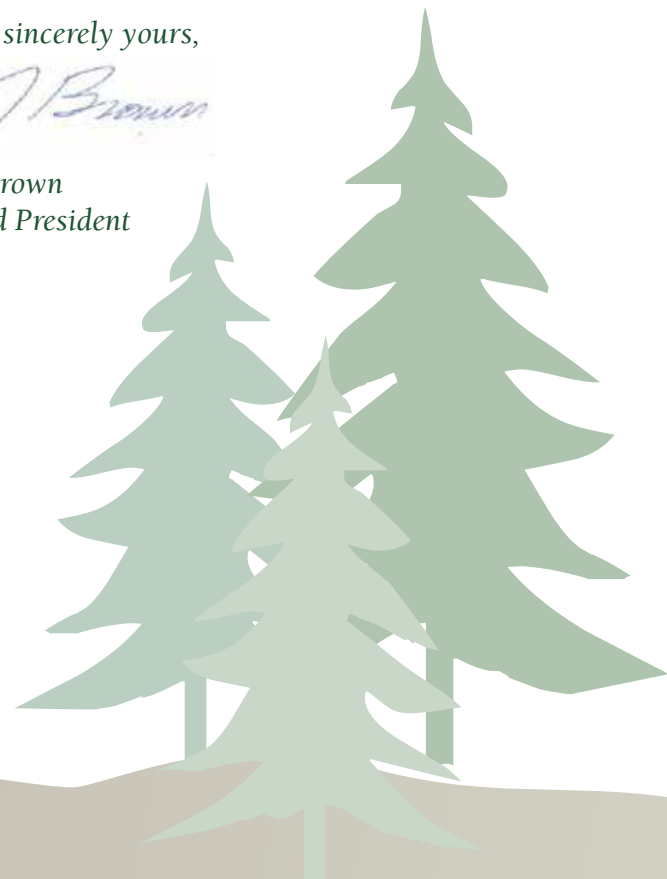
*The Brown family from left to right: Owen, Jeff, Wesley, Laura, and Anya. Photo by Bob Cunningham.*

Board is similarly comprised of diverse and accomplished individuals who dedicate considerable time and energy to the Land Trust. Like the staff, we have recently expanded our Board to include professionals with expertise overseeing specific elements of our operation.

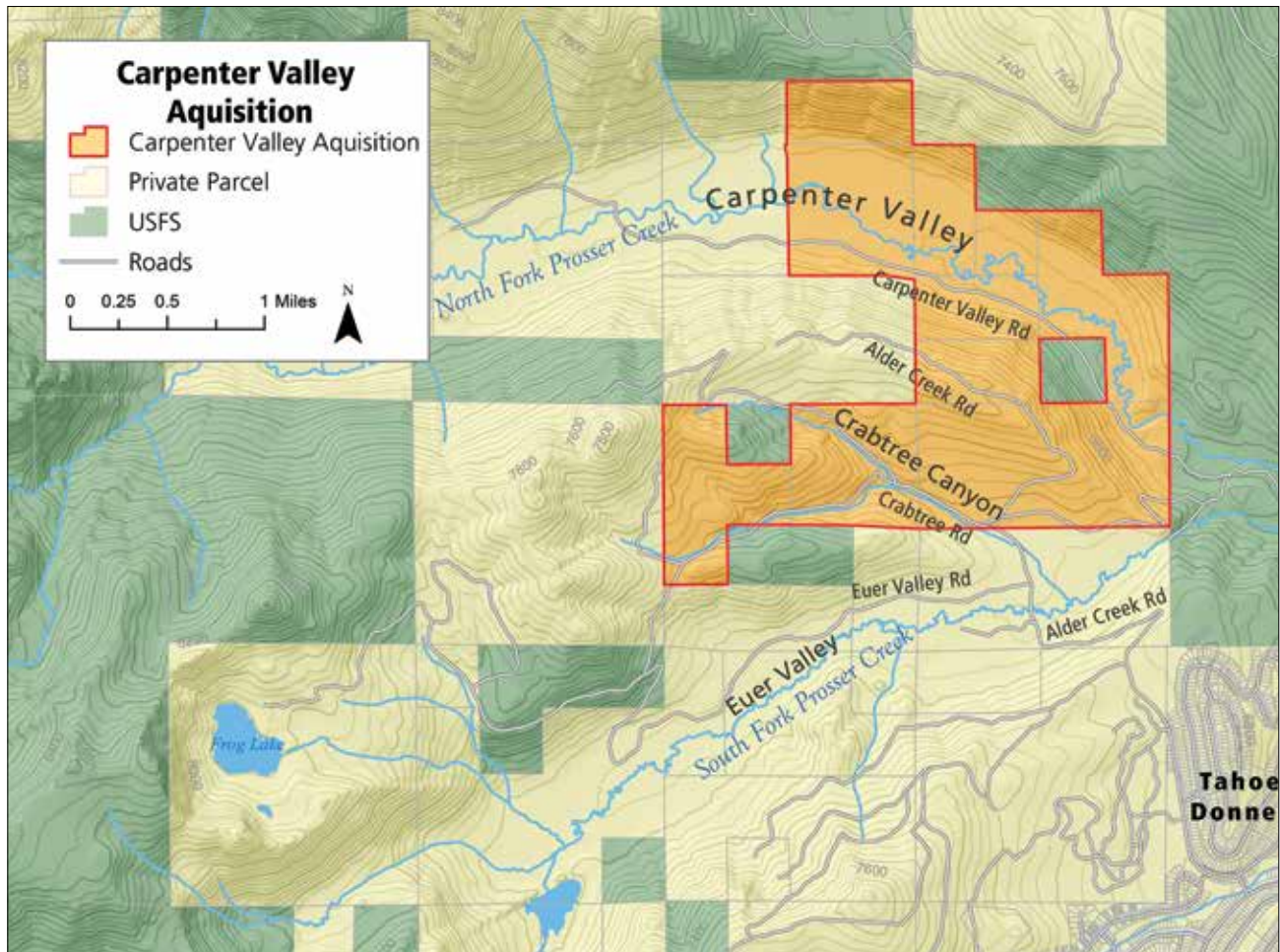
Finally, the Land Trust is nothing without you, the donors and volunteers who keep us running. Without your passion and support, we would be unable to do our work. Thank you for your continued support - now and into the future.

*Most sincerely yours,*

**Jeff Brown**  
Board President



# CARPENTER VALLEY



Carpenter Valley is one of the least known and most spectacular places in the northern Sierra Nevada.

Tucked in the folds of the Sierra, immediately north of Tahoe Donner and Euer Valley, Carpenter Valley has been in private ownership since dairyman William Carpenter and his wife Julia settled there in the 19th century. While descendants of the original settlers still own upper Carpenter Valley, the Land Trust is now working with The Nature Conservancy and the Northern Sierra Partnership to raise the \$10.4 million needed to purchase the eastern end of the Valley and protect its extraordinary natural values for future generations.

First identified as a priority for protection in The Nature Conservancy's *Sierra Nevada Ecoregional Assessment* (1999), Carpenter Valley is one of the healthiest meadows in the northern Sierra. The valley supports many native birds, including the threatened willow flycatcher. The valley's high water table and extensive willow shrubs, rushes, and sedges provide excellent nesting habitat for this State listed bird. The landscape also supports a wealth of other bird and animal species, from northern goshawk to bald eagle, mule deer, mountain lion, and black bear.

“Carpenter Valley is one of the most exquisite and pristine valleys in the northern sierra. What luck that we still have a chance to conserve it! We hope that everyone who cares about conserving the amazing natural landscapes around Truckee will help. The clock is ticking. We need to raise another \$3 million in private contributions over the next 12 months to preserve this incredible property forever. To find out how you can help, please contact Kathy at [kathy@tdlandtrust.org](mailto:kathy@tdlandtrust.org) or Elliott at [wright@northernsierrapartnership.org](mailto:wright@northernsierrapartnership.org).”

– Lucy Blake, President  
Northern Sierra Partnership

# CARPENTER VALLEY

My introduction to Carpenter Valley was in 2002. The Nature Conservancy (TNC) had just finished an inventory and study of the northern Sierra's natural resources. Carpenter Valley was listed as a "Portfolio Site," a place of extraordinary biodiversity and importance.

Jim Gaither, at the time the Chief Ecologist for TNC, and I were given permission by the late Jim McClatchy, one of the owners and a member of the famous newspaper family, to visit the property. Like a lot of folks, I had no idea this hidden valley even existed. It was like stumbling into Shangri-La. We walked through hip high grasses, admired wildflowers, the Sierra Crest to the west, and crawled on our bellies to the edge of Prosser Creek so as not to scare the huge trout we observed.

"What do you think?" Jim asked me.

"It should be a National Park," I replied.

Carpenter Valley may not be a National Park anytime soon, but in 2017, lower Carpenter Valley will finally be open for the public to discover its splendor, just as Jim and I were lucky enough to do 14 years ago.

– Perry Norris, Executive Director  
Truckee Donner Land Trust



Early morning mist lifts from lower Carpenter Valley. Photo by Sam Okamoto.

Given its size, healthy geomorphic condition and hydrologic regime, Carpenter Valley retains a large quantity of spring runoff, releasing clean, cold water back into the watercourse throughout the summer, which in turn sustains high quality aquatic habitat in Prosser Creek and the Truckee River. It is, in short, an example of how a subalpine Sierra meadow should work. Federal and state officials have identified the North Fork of Prosser Creek that bisects the meadow as ideal for the recovery of native Lahontan cutthroat trout. These federally threatened fish have been documented in the creek as recently as the late 80s and may still be present.

The protection of this property is a key part of a larger conservation effort in the middle Truckee River basin. This basin includes the Little Truckee River and Prosser Creeks, two of the largest tributaries to the Truckee River. The Nature Conservancy, Northern Sierra Partnership, The Trust for Public Land, and the Land Trust are in the process of protecting over 17,000 acres in the watershed.

"A lot of attention is being paid by conservationists in the Truckee region," said Jeff Brown, the Land Trust's Board President.

Other protected properties include Webber Falls immediately downstream from Webber Lake, as well as Perazzo Meadows, Independence Lake Preserve, Webber Peak, Lake of the Woods, and Cold Stream Meadow. All of these properties have significant conservation values, but when assembled together, they make a big dent in protecting an entire watershed. The project also augments the Land Trust's portfolio of protecting meadows and headwater properties, increasingly important as California weathers its fourth year of drought.

After the Land Trust purchases the property, it will own and manage it for the foreseeable future, working with public and private partners to restore and enhance the meadow's functions and open the gate for public enjoyment for the first time since the property was settled in the late 1800s. The southern-most portion of the property, which includes Crabtree Canyon, is owned and managed by Tahoe Donner, with further protection ensured by a permanent conservation easement held by the Land Trust. New summer trails and Nordic trails will be open next year in

# ACQUISITION

Crabtree Canyon. Tahoe Donner is a great partner and contributor to the success of this important project.

We invite you to connect with the campaign for Carpenter Valley today by joining a docent-led tour, hosting an event, or making your own financial contribution.

## How You Can Help

The Land Trust, The Nature Conservancy, and the Northern Sierra Partnership are now in the throes of raising the \$10.4 million needed to buy lower Carpenter Valley and steward it for the long-term. We anticipate that approximately 50% of the funding will be from public agencies and the balance from private donors.

Gifts of cash or stock are welcome and may be pledged over a period of two years. Thanks to the leadership of several individuals, all private donations to the Campaign to Conserve Carpenter Valley of \$10,000 or more will be matched, dollar-for-dollar, until we reach our private fundraising goal of \$5 million. In addition, all donors of \$10,000 or more will receive a signed, limited edition poster of Carpenter Valley designed by nationally renowned graphic artist Michael Schwab, and will have their names included on a bronze plaque mounted on a boulder in Carpenter Valley.

**To find out how you can help protect Carpenter Valley, please contact Kathy Englar at [kathy@tdlandtrust.org](mailto:kathy@tdlandtrust.org) or 530-582-4711 ext. 104.**

*Thank you, in advance, for your truly critical support.*



*A corn lily in bloom next to one of Carpenter Valley's many springs. Photo by Tony Mendoza.*

*Read more about Tahoe Donner's work with the Land Trust protecting open space on page 30.*

## Carpenter Valley Docent Tours

The Land Trust invites you out to see what all the excitement is about with our latest project. Join us for a docent led tour of Carpenter Valley on the following dates:

- June 11<sup>th</sup> and June 26<sup>th</sup>
- July 23 and July 31<sup>st</sup>
- August 13<sup>th</sup> and August 21<sup>st</sup>

Tours leave at 9 a.m. Call or email K.V. to sign up and for more details: [kv@tdlandtrust.org](mailto:kv@tdlandtrust.org), 530-582-4711, ext. 100.

*See our other events on pages 24-26.*



# VAN NORDEN DAM MODIFICATIONS



*Van Norden Dam is in disrepair and is considered an illegal dam by the State. The Land Trust will lower the spillway height, removing it from the State's jurisdiction, and placing it into a low-hazard classification according to Federal guidelines. Photo by Lori Carpenter.*

When the Truckee Donner Land Trust purchased the Royal Gorge and Van Norden Meadow properties, it knowingly inherited two significant problems: an illegal dam illegally impounding the State's water.

The dam is over 100 years old and in poor condition. In 2013, the California Division of Safety of Dams concluded that the dam is unsafe and would need to be rebuilt, lowered, or removed due to problems with seepage and cracks, not being keyed into bedrock, and located in a potentially seismically active area. Modifications were made to the spillway in 1976 and 1983. The prohibitive costs of repairs and challenges with securing the necessary water rights have discouraged prior owners and the Land Trust from restoring the dam.

In California, the adage "whiskey's for drinking and water's for fighting" is true. Water rights are a complicated and charged issue. The Land Trust does know that an application for water rights is expensive, certainly likely to be contested, and unlikely to be granted. The South Yuba River is fully appropriated between the period of June 15 to October 31 each year. The time to get a permit, given the State Water Resources Control Board (SWRCB) history is

approximately 25 years. Water cannot be stored in the interim.

"The Land Trust's Board carefully considered the option of applying for and buying water rights for an artificial pond. After reviewing the science and estimated cost, we concluded that the pond option provided no conservation gain and would be a poor investment of our donors' money," said Jim Hoelter of the Land Trust's Board.

In November 2015, the Land Trust drained the reservoir under direction from the SWRCB, implementing Governor Brown's emergency drought proclamation.

The Land Trust will be lowering the dam's spillway, removing it from the State's jurisdiction, and placing it in a Federal low-hazard classification. Lowering the dam spillway will also lessen water storage to a level below the need to secure an appropriated water right.

There are two design options being considered for the newly lowered spillway. One is simply to notch the spillway and cover it with concrete. This option, while less expensive, may prove infeasible given the age and decrepit nature of existing materials. The second option is a boulder-grade control structure that is more aesthetic, mimicking a series of natural riffles and plunge pools but is considerably more expensive. Both options are being considered under the California Environmental Quality Act, which will occur this year. Construction will likely commence in the fall of 2017.

## Van Norden Meadow Restoration

In the near future, the Tahoe National Forest will own and steward Van Norden Meadow. In partnership with the South Yuba River Citizen's League, the United States Forest Service will restore this important but badly degraded meadow.

Channelization of the South Yuba River and its tributaries, combined with the large fluctuations in the height of the reservoir, has left large portions of the meadow impaired and too dry to naturally function. Currently, the creeks and river flow in incised channels well below the root structures of many of the meadow plants. The damage can be easily seen in spring by walking along the river. Water weeps off of the cut banks and rushes downriver as opposed to staying in the meadow. The goal of the restoration is to raise the water table, re-creating areas that hold water well into the summer. These wet areas will be a boon to native plants and animals.

The Tahoe National Forest has nationally recognized expertise and experience restoring Sierra meadows, including restorations at Perazzo Meadows, Dry Creek Meadow, Merrill Valley, and Lower Davies Creek.



Lucy Blake, President, Northern Sierra Partnership

## What is the Northern Sierra Partnership (NSP)?

The Northern Sierra Partnership was launched in 2007 to accelerate our partners' efforts to conserve large, connected landscapes across the northern Sierra, for people, and for wildlife. Our five partners, including the Truckee Donner Land Trust, knew that we needed to pick up the pace if we were to succeed in protecting this incredible region. Since then, we've worked with private landowners and public agencies to conserve over 52,000 acres across the Sierra, from Martis Valley to Royal Gorge, Independence Lake Preserve and Sierra Valley. We hope to more than double that number over the next 2-3 years. The secret to our success is collaboration, focus, and the unparalleled dedication of our supporters. They know we need to act now to protect the large landscapes of the Sierra, and they are stepping up to help us meet the challenge.

## What makes the protection of the Sierra critical to the state of California?

The Sierra Nevada is the source of over 60% of California's fresh water and the primary source of water for northern Nevada. The spectacular natural landscapes of the Sierra support extraordinary flora and fauna, from giant sequoia to Sierra bighorn sheep. The region is also a mecca for visitors from the world over, who come to California to experience Yosemite National Park, Lake Tahoe, and wander the byways of the Sierra Nevada. Finally, the Sierra is a place of joy and personal renewal in our hectic modern lives. Whether we live here or visit on weekends, the Sierra sustains us in so many ways.

# MEET OUR PARTNER

Lucy Blake, President,  
Northern Sierra Partnership

## What do you view as NSP's most important work in the northern Sierra?

a) Mobilizing the private and public resources to conserve this incredible region while we still have the chance. b) Facilitating the collaboration of our partners. c) Thinking out of the box about new ways to get the work done.

## What are the most pressing threats to the Sierra?

High demand for mountain homes juxtaposed with insufficient commitment to protecting the natural systems that sustain life on Earth. Also climate change, which demands we accelerate the restoration of our forests.

## What role does NSP play in the northern Sierra besides land protection?

NSP is an extension of our partners and, as such, their work is our work. Our goal is to conserve, restore, and expand opportunities to enjoy the northern Sierra. Over the past eight years, in addition to meeting the conservation targets outlined above, we've worked with our partners to restore four meadows, 3.7 miles of streams, and 1,175 acres of forest, improving water quality and quantity, and reducing the risk of high-intensity wildfires. We've also helped to build over 36 miles of trails, 15 trailheads, 18 informational kiosks, 15 picnic areas, and a bird-viewing platform.

## How do land trusts like the Truckee Donner Land Trust help NSP?

The Truckee Donner Land Trust and the Feather River Land Trust are indispensable to the success of our campaign, now and in the future. When we put together our Strategic Plan, our local partners brought their in-depth knowledge of the area to the task of targeting properties for conservation. They have landowner contacts and their ears to the ground, helping us to anticipate and seize opportunities. And they have a commitment to stewarding these lands in the public interest, for decades - even centuries - to come.

Learn more about the  
Northern Sierra Partnership  
by visiting  
[www.northernsierrapartnership.org](http://www.northernsierrapartnership.org).

# GRASSROOTS CAMPAIGN TO SAVE DONNER CLIMBING FANTASTICALLY SUCCESSFUL

The Truckee Donner Land Trust, in partnership with the Access Fund, a national climbing organization, is pleased to announce the acquisition and protection of a significant group of climbing areas on Donner Summit, just west of Truckee. The victory came only months after launching the Save Donner Climbing Forever fundraising campaign.

At the heart of the acquisition is the historic 400-foot Black Wall that stands guard on the eastern flanks of Donner Summit. Also included are smaller crags known as the Peanut Gallery and Road Cut. The acquisition also protects the access trails to the popular Space Wall and Stealth Wall.

“This is a great win for conservation and our community, but an even bigger victory for climbing,” said longtime local climber, Hans Standteiner.

The climbing on Donner Summit is set amidst some of the most dramatic terrain in the Truckee-Tahoe region. The world-class climbing features finely textured granite with deep chimneys, low-angle slabs, overhanging test pieces, and splitter cracks. There are climbs for both experts and beginners alike.

“Now, residents, visitors, and climbers alike can celebrate knowing this scenic landmark and these world-class climbing areas are permanently protected,” said Jeff Brown, the Land Trust’s Board President.

Climbers have been scaling the walls on Donner Summit for over 50 years. But in 2013, the private landowners expressed concerns about liability, putting access to the historic climbing area at risk. Local climbers, the Access Fund, and the Land Trust reached out to the landowners, and after nearly a year of negotiations, they agreed to sell the property.

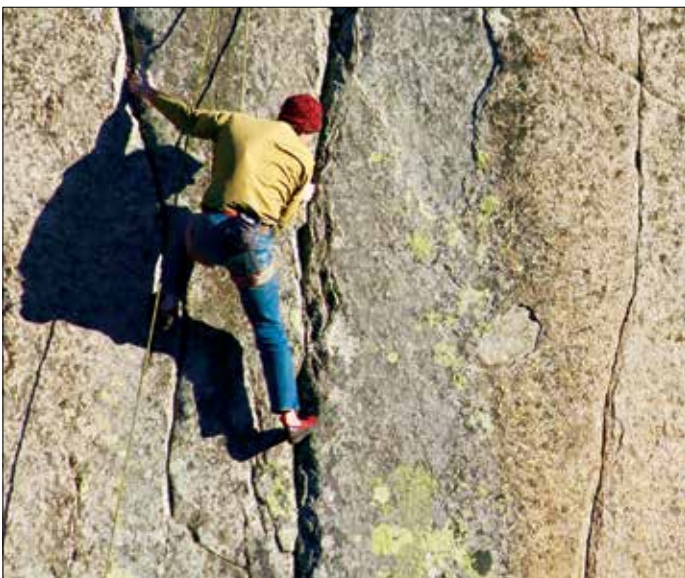


Photo by Susan Johnson.

The climbing community and partners banded together, and in just seven months raised over \$300,000 to purchase the property. A group of local climbers led the grassroots fundraising effort, and both Planet Granite and Touchstone Climbing gyms played a critical role encouraging their members to match their donations. Hundreds of climbers nationwide and local residents donated to protect the climbing resource while athletes gave slideshows at local venues. Outdoor companies donated gear for auctions and raffle prizes.

“We are proud and delighted to have joined with our members and the climbing community to help protect this land for future generations of climbers to enjoy,” said Micky Lloyd, climber and founder of Planet Granite. “It is great to see what we can all do when we rally around an important issue.”

“The acquisition would not have happened without the amazing response of the climbing community,” said Brady Robinson, Access Fund Executive Director. “This will be a long-lasting partnership among the partners and the entire climbing community that came together.”

The Land Trust will own the 11.9-acre property, adding it via a boundary line adjustment to the neighboring 55 acres of land it already holds in fee. Access Fund will maintain a permanent conservation easement on the Black Wall property to back up the Land Trust’s long-term commitment and ensure climbing access in perpetuity.

With support from local climbers, the Land Trust and Access Fund will steward the area, work to minimize climber impacts, improve trails and trailheads, provide informative signage, and protect nesting peregrine falcons in the area. The Land Trust has further plans to connect a multi-use, non-motorized recreational trail from Donner Lake to the climbing wall and up to the summit, attracting more visitors to support the local economy.

“Next steps are trail planning, stewardship, and additional trailhead improvements here at Black Wall and the greater Donner Summit area,” said Gary Allan, local climber and Project Manager for the Save Donner Climbing Forever campaign. “Let’s keep this momentum going.”

Read more about nesting peregrin falcons on page 30.

## Special thanks to the climbing community:

Gary Allan	Jim McCarthy
Tommy Caldwell	Dave Nettle
Hans Florine	Eric Perlman
Max Jones	Joe Sambataro
Jimmy Hayden	John and Sidney Scott
Alex Honnold	Han Standteiner
Chris MacNamara	Jim Zellers



# LAND DEAL LOCKS IN POPULAR MOUNTAIN TRAIL ACCESS

The land around one of the northern Sierra Nevada's most popular trailheads has been taken off the market and conveyed to the Tahoe National Forest, thanks to the Truckee Donner Land Trust and The Trust for Public Land (TPL).

For more than 15 years, the thousands of outdoor enthusiasts who used the Castle Valley trailhead were greeted by a "For Sale" sign offering the land for \$7.5 million "FIRM", with a phone number to call. To deter potential buyers, someone wrote a '1' in front of the '7.'

But the Land Trust and TPL bought the property from its private owner for \$2.1 million, far less than the sign's figure, and sold it in the same escrow to the United States Forest Service (USFS) for the same price.

The purchase of 412 acres protects the beginning of a well-used, year-round trail network that leads people to some of the most popular and easily accessed back-country in the northern Sierra, including Castle Valley and Castle Peak, the Sierra Club's Peter Grubb Hut, the Hole in the Ground Trail, and the Donner Lake Rim Trail. The Pacific Crest Trail Association said the acquisition will protect views and improve access to one of the most popular sections of the Pacific Crest Trail.

"This is arguably the most popular trailhead in our corner of the Sierra. The Land Trust looks forward to working with the Forest Service to improve the visitor experience," said Jeff Brown, the Land Trust's Board President.

"The transaction is a great example of partnerships between nonprofits and governmental agencies. We can bring resources and money the USFS does not have to serve the public interest," Brown added. "It is a great way to leverage federal dollars with local dollars and stakeholders."

"Thanks to the work of many of our partners, we are excited to add this portion of Castle Valley to the Tahoe National Forest," said Eli Ilano, Tahoe National Forest Deputy Supervisor. "This area contributes to the protection of the South Yuba River watershed, provides important



For more than 15 years, thousands of recreationalists who used the Castle Valley trailhead were greeted by this sign.

wildlife habitat for a number of species, and adds outstanding recreational access and opportunity to the public."

The project augments the Land Trust's efforts to restore the badly degraded Van Norden Meadow, the headwaters of the South Yuba River.

The \$2.1 million came from the Land and Water Conservation Fund (LWCF), the federal government's main source of money for land protection. Congress recently extended the program for three years. U.S. Senators Dianne Feinstein and Barbara Boxer, both D-CA, supported the Castle Valley funding as well as the LWCF reauthorization.

The Land Trust and TPL are members of the Northern Sierra Partnership (NSP), a collaborative initiative to conserve, restore, and enhance the magnificent natural landscape of the northern Sierra Nevada, and build the foundation for sustainable rural prosperity. NSP has protected tens of thousands of acres from Mt. Lassen to the Tahoe Basin. Learn more here: [www.northernsierrapartnership.org](http://www.northernsierrapartnership.org).

## Thanks to our Generous Blackwall Grant Funders & Partners

Not only does the Land Trust rely upon individual donors, family foundations, and trusts to acquire critical open space as opportunities arise, we greatly rely upon grant funders. Thanks to the generous grant funds provided by the following organizations, we were able to complete the Save Donner Summit Climbing campaign:

The Conservation Alliance  
REI  
Tahoe Truckee Community Foundation/Nature Fund  
The Andrew Sabin Family Foundation  
Access Fund  
American Alpine Club  
Vail Resorts EpicPromise

Thanks to the businesses that hosted famous climbers for climbing presentations, slideshows, and fundraising events:

Berkeley Ironworks  
California 89  
Mountain Area Preservation  
Patagonia Reno  
Planet Granite  
Tahoe Sports Hub  
Touchstone Climbing Gyms

We hope you thank and support our partners in conservation!

# THE LAND TRUST CELEBRATED 25 YEARS!



Cheers and smiles all around. Photo by Susan Johnson.

This past year, 2015, was a year of celebration for the Land Trust's many donors, partners, and its Board and staff. Last fall, over 250 guests whooped it up, celebrating 25 years of land conservation and over 33,000 acres protected.

Our 25th Year Celebration was held at the newly acquired Coppins Meadow at Webber Lake. A line-up of public and private officials spoke with passion and elation for the land Trust's legacy. A feeling of awe filled Coppins Meadow as the celebration rolled into the early fall evening, and guests were delighted with a slew of free raffle prizes.

The Land Trust was thrilled to see so many of our supporters there and sure missed those who couldn't attend. We'll see you again at our 30th!

## Support Conservation with a Donation of Stock

Donating stock or other securities to the Land Trust is a tax-efficient way to make a meaningful contribution to the Land Trust. These gifts may also help you to reduce your income and capital gains taxes, allowing you to make a larger gift at a lower cost. For these reasons, a gift of appreciated securities may be one of the best ways for you to support the Land Trust. Please consult your tax advisor for details and contact Kathy at [kathy@tdlandtrust.org](mailto:kathy@tdlandtrust.org), 530-582-4711, ext. 104 for assistance.

## A special thanks to our event Sponsors:

Squaw Valley Ski Corporation  
Vail Resorts Charitable Fund  
Tahoe Mountain Resort Foundation  
Truckee Tahoe Airport District  
Sugar Bowl Ski Resort



A beaming Land Trust staff accepts special recognition from Darla Guenzler of the California Council of Land Trusts. From left to right: Anne Chadwick, Board President; Kevin Starr, Stewardship Coordinator; John Svahn, Stewardship Director; Perry Norris, Executive Director; Ward Fansler, CFO; K.V. Van Lom, Director of Communications & Administration; Kellie Wright, Director of Philanthropy. Photo by Susan Johnson.

# A SPECIAL SHOUT OUT TO FOUNDATIONS AND PUBLIC FUNDERS

The Land Trust could not accomplish its many acquisition, stewardship, trail, and restoration goals without the generous grant support it receives. A heartfelt thanks goes to the following organizations from the Land Trust:

## Caltrans EEMP and the California Natural Resources Agency

Thanks to a \$590,000 Environmental Enhancement Mitigation Program grant from Caltrans and the California Department of Natural Resources, for assisting with the funding for the 155-acre Coppins Meadows addition to the Webber Lake acquisition.

## National Fish & Wildlife Foundation

The National Fish & Wildlife Foundation made a grant of \$250,000 toward the purchase of Coppins Meadow. Coppins Meadow was one of the last remaining developable parcels within the Little Truckee River watershed – the largest sub-basin in the Truckee River drainage. The Little Truckee River watershed contains the largest complex of montane and subalpine meadows in the Truckee basin. The Land Trust and other conservation groups are in the process of protecting more than 17,000 acres in the Little Truckee River watershed.

## The Conservation Alliance

The Conservation Alliance is a group of outdoor industry companies that disburses its collective annual membership dues to grassroots environmental organizations. In 2015 the Alliance invested \$40,000 in the acquisition of Black Wall. For more information on Black Wall, please see pages 8 and 30.

## Recreational Equipment, Inc. (REI)

New challenges arise as Donner Summit continues to gain popularity as a recreation destination. These include better management of parking, sanitation, and dispersed use of the backcountry. REI generously granted the Land Trust \$20,000 to aid in the acquisition of Black Wall and planning for a new trail head and trails. For more information on Black Wall, please see pages 8 and 30.

## Andrew Sabin Family Foundation

Thanks to the Andrew Sabin Foundation for a \$10,000 grant. This grant helped fund the Black Wall acquisition. For more information on Black Wall, please see pages 8 and 30.

## The Mellam Family Foundation

The Land Trust received a \$10,000 grant to support the acquisition of Carpenter Valley. Learn more about Carpenter Valley on pages 3-5.

## Vail Resorts EpicPromise

The Land Trust received a \$7,000 grant in support of our Donner Summit Trails & Recreation Program. Vail Resorts' EpicPromise program continues to provide needed funds to assist the Land Trust with important land acquisitions, and we truly appreciate their ongoing support of our work. The Land Trust is deeply grateful to Vail Resorts EpicPromise for its continued service within our community and for providing funds critical to our work and the region's many nonprofits.

## Tahoe Truckee Community Foundation

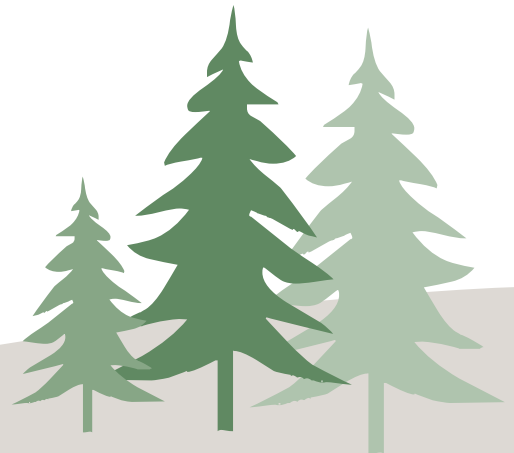
Thanks to the Tahoe Truckee Community Foundation for managing the second annual Give Back Tahoe Campaign and for their expert facilitation of charitable donations in our community.

## The Access Fund

The Access Fund granted the Land Trust \$6,000 for the acquisition and stewardship of Black Wall. In addition to helping with funding, the Access Fund partnered in the acquisition, providing expertise, and holds a conservation easement on the property. For more information on Black Wall, please see pages 8 and 30.

## American Alpine Club

Thanks to the American Alpine Club for a donation of \$3,500 for the acquisition of the Black Wall property. For more information on Black Wall, please see pages 8 and 30.



# THANK YOU TO OUR DONORS

The Land Trust and its partners gratefully acknowledge the many individuals, businesses, and foundations that made gifts to the Land Trust from January 1, 2015 to February 29, 2016. These donors provide fundamental and annual support for the Land Trust's mission.

\* Donors that have given 10 to 19 years \*\* Donors that have given 20 years or more

## \$1,000,000 or More

Ernest Tschannen

## \$250,000 - \$999,999

California Natural Resources Agency -  
California Transportation Commission

## \$50,000 - \$249,999

Jeff & Marsha Jellin  
Mr. Jim Loughlin \*  
Susan McClatchy \*  
Lucas & Elizabeth Pereira  
Sky View Foundation

## \$25,000 - \$49,999

Anonymous  
The Conservation Alliance  
The Overall Family Foundation  
The Trust for Public Land  
Kenneth & Megan Wright

## \$10,000 - \$24,999

The Access Fund  
Andrew Sabin Family Foundation  
Tom & Louise Burns \*\*  
Crabb-Grasseschi Family Foundation \*  
Gordon & Carolyn Davidson \*  
Shanna O'Hare & John R. Davis \*  
Jeri Ann Smith & Tony Francis \*  
Drs. Sue Desmond-Hellman & Nick Hellman \*  
Jim & Denny Hoelter Family Partnership \*\*  
Helene & Charles Linker \*

Mellam Family Foundation \*  
Catherine Nason \*\*  
Mr. Andre Henri Joseph & Mrs. Kristin G. Pech  
Planet Granite Belmont, LLC  
REI, Inc.  
Mike P. Roudnev & Family  
Tahoe Truckee Community Foundation \*  
Harry Tarbell III - Tarbell Family Foundation  
Carolyn Johnson & Rick Theis  
J. Thomas & M. Catherine Van Berkem \*  
Northern Sierra Partnership

## \$5,000 - \$9,999

Anonymous  
Aufmuth Family Foundation \*  
Ausfahl Family Fund  
Mr. & Mrs. E.W. Barnholt \*  
The Nancy & Joachim Bechtle Foundation  
Martin & Holly Bern \*  
Vivian & Bruce Euzent \*  
Julie Thornton & Craig Falk  
Dan & Monica Flynn \*  
Mike & Sue Friedenbach \*  
Russell & Deborah Godt  
Bill & Sara Jo Goerke \*  
Isaac & Renee Goff \*  
Daniel S. Haas Fund - Marin Community Foundation  
Hamill Family Charitable Fund - Bank of America Charitable Gift Fund \*\*  
Margaret Hand & John Hartog \*  
Mary ES Loomis  
Melinda E. Maxfield - Maxfield Foundation at the Bessemer Trust  
Mr. Frederick D. Minnes \*  
Olander Family Foundation  
Carol & Michael F. Sabarese \*  
The Seelenfreund Family Fund  
Serene Lakes Prop Owners Assoc.  
Mr. Ian Simmons  
Christopher & Edie Smith  
Jean Snuggs

Mr. & Mrs. Thomas W. Tusher  
Mr. & Mrs. E.W. Barnholt  
Robert & Christine Wendin \*  
Bill & Diane Zuendt

## \$2,500 - \$4,999

American Alpine Club  
Anonymous  
Thomas Ausfahl  
John R. & Gina Biondi \*  
Dick & Carol Bourne  
Sharon & John Brauman \*\*  
Sue & Cliff Busby - Castle Peak Snow Removal/Los Gatos Construction  
Cragmont Climbing Club  
Members of CRAGS  
John & Barbara Crary \*  
Francoise Beaufays & Luca de Alfaro  
Merle & Michael Fajans \*  
Pamela Polite & Dennis Fisco \*  
Mrs. Eleanor Hewlett Gimon \*\*  
Mr. & Mrs. Peter Golze \*  
Charles & Gail Greene - HUG Fund, Marin Community Foundation  
Geoffrey & Barbara Griffin  
Kirby & Toni Hallenbeck  
Robert & Clair Hamner \*  
Mr. & Mrs. Jon Hartung \*  
Stormy Snively & David Hensley  
Robert & Mary Hery \*  
Tamara Sasaki & Zachary Hymanson  
Rod & Jonnie Jacobs \*  
Douglas Lacey & Cindy Silvani-Lacey \*  
Gary & Carolyn Lawson  
Ms. Suzanne Legallet \*  
Susan Ellis & Mark A. Linton \*  
Judy Mayorga \*\*  
Phil & Carolyn McIntyre \*  
Ms. Alyce McNerney-Stanwood  
Zaitlin-Nienberg Family Fund - Fidelity Charitable  
Seana Doherty & Perry Norris \*  
Northstar California Resort  
Barbara Lovero & Chris Ottenweller \*  
Page Foundation \*  
Dr. Andrew Pasternak, M.D., M.S. - Silver Stage Center for Family Medicine  
William & Margaret Person \*  
Bruce Whittaker & Virginia Robbins  
Scott Ryan - Ryan Group Architects \*  
Art & Sue Scotland \*\*



Mule deer from the Truckee-Loyalton deer herd. Photo by Susan Johnson.

# THANK YOU TO OUR DONORS Jan. 1, 2015 to Feb. 29, 2016

Steven & Wendy Shray  
 Lauren Reager & Margaret M. Sohagi  
 Matt Warren & Sam Solomon -  
 SnowTech  
 Drs. Amy Anderson & George Somero \*  
 Squaw Valley USA  
 Gordon & Ruth Steindorf \*  
 Erik Swan  
 Tahoe Mountain Resorts Foundation -  
 Mountainside Partners.  
 Martin & Rebecca Taylor III  
 Bela & Mimi Vadasz - Alpine Skills  
 International  
 Steve & Raini Vallarino \*  
 Grace & Steven Voorhis  
 Kenneth & Lynne Weakley Family  
 Trust  
 William Wendin \*  
 Nancy Wendt Cushing \*  
 Benjamin Wheeler Fund - Fidelity  
 Charitable Fund  
 Thomas P. Winn Foundation  
 Truckee River Watershed Council

## \$1,000 - \$2,499

Donna Poggi & Jay Anderson  
 Mr. & Mrs. Mark L. Andrews  
 Anonymous  
 Law Offices of Thomas S. Archer  
 Jim & Kathy Atkinson  
 Mrs. Nancy C. Bean \*  
 Damon P. & Stephanie Becker  
 Ted A. & Julia G. Behar - Cedar Hollow  
 Farm  
 Richard Booth  
 Ms. Diane K. Boyer  
 Robert & Lois Braddock  
 Sheila & Michael Brand  
 D. Mark Brown  
 Chip & Mary Brown  
 Mr. & Mrs. John Buckley  
 Rob & Wrenn Cavallo - Tahoe Sports  
 Hub  
 Anne Chadwick \*  
 Mr. Ernest Chan  
 Douglas & Susan Chance  
 Jim & Ann Christol  
 Paul Coelho  
 Donner Lake Property Owners Assoc \*  
 Ms. Helen Conway  
 Laura Lindgren & Allan Crawford  
 Mr. Wayne Crow \*  
 Ms. Patricia Beus Daffurn  
 Stephen DeLucia  
 Albert Flynn DeSilver  
 Frederick Dill  
 Susan Groshong & Bob Dillard  
 Laurie & Ralph Eddy  
 Mrs. Shirley Ely  
 Mr. & Mrs. Dean Eppley  
 Katherine Erickson  
 Keith & Susi Farmer

Robert & Cathy Christian  
 Farnsworth \*  
 Gerald & Linda Feeny \*\*  
 Nancy Light & Chris Fichtel  
 Robert & Donna Frassinello  
 Patty Coe & Barry Freifeld  
 David George  
 Rick & Val Girling  
 Noah Goldberg  
 Ms. Pearl Greenberg  
 Margaret Lewicki & Ernest  
 Grossman \*  
 Sarah & Parke Hafner  
 Ken & Lynn Hall - Hall  
 Family Trust \*\*  
 Sam & Mary Hammonds \*  
 David & Gale Harding \*  
 Mr. & Mrs. Ed Henney \*  
 Dr. Dale & Jill Herrero  
 Joseph & Sue Huettl  
 Caroline Hendriks & James Jenkins  
 Mr. & Mrs. Derek Kirkland \*  
 Eva Kryska  
 Carolyn Magin & Thomas Kulczycki  
 Dr. & Mrs. Kevin Kveton \*  
 Howard & Julia Laney  
 Jeff & Cathy Lang \*  
 Mr. Eric Law - Stacia Law  
 Mr. Jon Lee \*  
 Joyce Lee  
 Joan Ludlam & Dan Leighton  
 Kerri & Mark Lubin \*  
 Olivia Diaz & Dr. Ernie Malamud  
 Timothy Maly  
 Dr. & Mrs. Dan Martin - Tahoe Oral  
 Surgery and Implant Center  
 Mr. & Mrs. Ed Matthews  
 Drs. Anne Kimi Fukutome & Robert  
 Mithun  
 Sue Barton & Don Morrill  
 Paul & Pat O'Hara  
 Stefanie Olivieri - Cabonas \*  
 Stanley & Georgene Pasarell \*  
 Toni & Dick Paterson  
 Mr. & Mrs. Javier Castellar & Helen  
 Pelster \*  
 Drs. Brad & Trish Piatt \*  
 Adam Pisoni  
 Plumas Bank - Shelly Wright \*  
 James & Amy Ramsey  
 Mr. Gordon Ringold  
 Jan Rous  
 Mr. & Mrs. Allen Ruby \*\*  
 Dr. Frank Sarnquist \*\*  
 Diane Scanlon \*  
 Gregory Schaffer  
 William & Virginia Schultz \*  
 John & Sidney Scott \*  
 Ann Reisenauer & Dick Simpson  
 Donner Lake Woods Homeowners  
 Association  
 The Solomon Foundation \*



Photo by Susan Johnson.

Mr. & Mrs. Joe Stemach \*  
 Shaun & Suzanne Sullivan \*  
 Suspense Suspense  
 Mr. & Mrs. Jack Svahn \*  
 William & Mary Alice Thauvette \*  
 Mr. & Mrs. Garfield Thomas \*\*  
 Mr. & Mrs. Edward Thomas  
 Janet & Dave Tight  
 Alexander Tolger  
 Gavin Towey  
 Mr. Nathan Trueblood  
 Peter & Melissa Valchev  
 Katie & Joe Veni  
 Mr. & Mrs. Richard Volberg \*\*  
 Jack & Judy Warner \*  
 Robert T. & Laura Wendel  
 Vicki Peet, Steve, & Sue Zimmermann  
 Charles & Janet Zipser Zipkin \*  
 Mr. & Mrs. Mark David Zoback \*

## \$500 - \$999

Scott Showen & Peter Amsden \*  
 Mr. & Mrs. Carsten Andersen \*  
 Dr. Robert & Mrs. Susan Anderson  
 Anonymous  
 Mr. & Mrs. James R. Bartlett  
 Annie Bailey & Douglas Bibby  
 Mr. & Mrs. John Bollinger \*  
 David & Jeanne Bovill  
 John & Patty Brissenden - Sorensen's  
 Resort \*  
 Jeff Brown  
 Ronald & Raquel Brown  
 Jeff Cotsifas & Kiersten Burke  
 Dr. David & Judith Burke, M.D. \*  
 Mrs. Mary Joyce Burks  
 Paul & Carole Carleton  
 The Caven Family  
 Mr. & Mrs. Frank Champion \*  
 Dr. Dennis Chez - Gateway Urgent Care  
 Rob & Shana Chrisman  
 John & Lisa Cobourn \*  
 Brian Cox  
 Kevin Crosby  
 Diane & Will Davis

# THANK YOU TO OUR DONORS Jan. 1, 2015 to Feb. 29, 2016

John Deakyne  
 Seth Dee  
 Robert & Morrene DeVinck  
 Leonor Dicdican  
 Drs. Denis & Barbara Drew \*  
 Lynn Russell & Jeremy Dunworth  
 Frank Smith & Dr. Dian Duryea \*  
 Camille Duvall-Hero  
 Drs. Pam & John Eisele  
 Orlo & Marilyn Elfes \*  
 John & Lane Emerick  
 Lars Ensign  
 Judy & Terry Erhardt - Erhardt Construction \*  
 Rodrigo Espinosa \*  
 Vito Esposito  
 Ward Fansler  
 Mr. & Mrs. Patsy & George Fish \*\*  
 Joe & Jackie Floyd - Floyd Construction, Inc.  
 Bob Fong  
 Michael & Diana Fredrich  
 Richard & Lincoln French  
 GS Improvisation  
 Drs. Lisa Querimit & Frank Galli \*  
 Gregory & Penny Gallo

Law Officer of Michael Graham \*  
 Jonathan & Tina Gray  
 Robert & Kathleen Kearley Green \*  
 Scott Greenberg  
 Thomas Daniel Gross  
 Charles & Marcia Cohn Growdon \*\*  
 Mr. & Mrs. Arne Hamala  
 Nathan Hamilton  
 Shermain, Mike & Claire Hardesty  
 Mr. & Mrs. William Haskell \*  
 Morgan & Patrick Hector  
 Ralph H. Hendrix \*\*  
 Tom & Sondra Herbert  
 Fran Haulman Herbst  
 Mark & Nancy Himmelstein \*\*  
 Stu Hood  
 The Hunstock Family Fund  
 Thomas K. & Evelyn M. Hunt  
 Charles Hutchings  
 James & Janice Hutton  
 Dr. Diana Johns \*  
 Scott W. Johnson - Marindependent Insurance Services, LLC  
 Ms. Padget M. Kaiser \*  
 Mr. & Mrs. John Kelly \*  
 Scott Kessler - High Country Construction  
 Andrew King  
 Bree & Kevin Klotter \*  
 Daniel O'Brien & Laura Kodres  
 Mr. & Mrs. Grady Kromer  
 Susana Krulevitch  
 Chris Kurtz  
 Mrs. Barbara Larson \*  
 Mike & Ann Linnett \*  
 Mina Liu  
 Peter & Suzanne Lock  
 Heidi Bosselman & Tom Logue  
 Mr. & Mrs. Lawrence C. & Linda Long - Amador Cellars  
 Mr. & Mrs. Robert Lufburrow  
 Bill & Norma Markley \*\*

Pam & Jeff Muha \*  
 Mr. & Mrs. Richard Nicoll \*  
 Mr. & Mrs. Frank Noonan \*  
 Northstar Property Owner's Assoc. \*  
 Dennis Pagones  
 Hal Parker \*\*  
 Benjamin Pope  
 Glen Poulsen  
 Dr. & Mrs. Michael Puckett  
 Mary Simpson & James Reinke  
 Kyle Reinke  
 Kurt Reinkens - MWA Architecture and Engineering  
 George Rekouts  
 Julie & David Riggs  
 Mr. Craig Ritchey \*\*  
 Anne Harper & Rick Ronald - Skyline Pacific Properties \*  
 Kathleen Lelevier & Richard Rose  
 Gordon & Vicki Rosenberg  
 Susan Rosenberg  
 Kate & Doug Rundle  
 Paul & Edna Schumacher  
 Daniel Seeliger  
 Shanser Family Foundation Fund - Tahoe Truckee Community Foundation  
 Mike & Jan Shinn \*  
 Dan & Charlene Simmons  
 Daniel L. Simmons  
 Drs. Irina de Fisher & James Scott Sinnott \*  
 Mr. & Mrs. Holly Hagens & Todd Sisitsky  
 Dorothy Dube & Mark Slomoff \*  
 John & Sue Sorensen \*  
 Thomas Steuber  
 Lynn M. Suter \*  
 Jun Suzuki  
 Tahoe Truckee Airport District  
 Mr. James Teddy  
 Cal & Mary Tilden  
 Mr. & Mrs. John Tiner - Tiner Properties, Inc. \*  
 Dr. & Mrs. Greg Tirdel  
 Mr. Reid Towery  
 Truckee Overhead Door  
 Bridget Flanagan & Peter W. Van Der Naillen  
 Nick van Woert  
 Teri & Mark Vershel  
 Nadia von Magdenko  
 Mr. & Mrs. David S. Walker \*  
 Carolyn & Dick Warmington  
 Ellie Huggins & Dan Wendin \*\*  
 Mr. & Mrs. Dan Wettstein \*  
 Deborah Wettstein  
 Angela White \*  
 Buzz & Jan Wiesenfeld \*  
 Louise & Dick Wiesner

Linda Suter & Rob Wunderlich  
 Todd Zaayer  
 Mrs. Joanna & Stephen Zito \*

**\$250 - \$499**

Chris & Sue Adams \*  
 Bill & Judith Beaty  
 Mr. & Mrs. Jan Benes  
 Doug & Rita Boehner & Family \*  
 Mr. & Mrs. Jeff Bonzon \*  
 Jack Boyce  
 George & Leealyn Brandt \*  
 Mr. & Mrs. Dick Brooding \*\*  
 Carl & Nanon Buchell  
 Laurie A. Burden  
 Michael & Dianne Butler  
 Paige Derdowski & Kelley Carroll \*\*  
 Geoff & Patty Chin  
 Thomas Clifford  
 Dick & Ellen Cochran \*  
 Brian Connors - Peak Landscape, Inc.  
 Bill & Evelyn Covington \*  
 Mr. Robert Crowder \*  
 Dick & Sue Cunningham \*  
 Mr. & Mrs. B. Craig Duncan  
 Justin Dunscombe  
 Jim Duffy & Kathleen Eagan \*\*  
 Dr. John & Elizabeth Eaton \*  
 Tom & Deb Echenique - Echenique Construction \*\*  
 Mr. & Mrs. Charles Farnsworth  
 Mr. & Mrs. Paul Fitzpatrick \*  
 William & Martha Folk  
 Mr. & Mrs. Paul Franco-Ferrara \*  
 William & Judy Brown Gardner  
 Constantin & Maude Genigeorgis \*  
 Stephen & Teresa Godfrey  
 Keith Goebel  
 Mr. David Graber  
 Michael & Gail Griesmer \*  
 Mr. Jeffrey L. & Debbie Gualco  
 Kyle & Anne Hoffman \*  
 Maggie Fillmore & Mark Huffman \*  
 Paul & Dot Ingels \*  
 Mr. Chris Kantarjiev  
 Mr. & Mrs. Kirk Keil  
 Phillip Keslin  
 Robert Kirkwood  
 Mr. & Mrs. Thomas A. Knapp \*  
 Jill & Carsten Kristensen \*  
 Brad & Jeff Lambert-Stone  
 Evelyn Lee  
 Ruth Daniel & Kendrick E. Lee  
 Jennifer Leidigh  
 Tanya Reuvekamp & Lloyd Lettis Jr.  
 Hank & Eileen Lewis \*  
 Stephen & Tamara Lieberman \*



*Columbine.*

Gateway Mountain Center - Social and Environmental Entrepreneurs, Inc.  
 Amy Shaw & David George  
 Ms. Gail Baker & Mr. David Giacomini - Sierra Mountain Mortgage \*\*  
 Wes Goodman  
 Dr. Michael J. & Laurel Gothelf \*  
 Lisa Gotts - California 89

Jenny & Randy Martin \*  
 Robert & Marty Martin \*  
 Laura Mateo  
 Mr. & Mrs. Daniel & Maya McBride  
 Scott & Donna Meek - The Meek Family Trust  
 Mr. Dirk Mellema \*\*  
 Dennis & Nancy Meyer - Andregg, Inc  
 Stephen & Andrea Brideau Miller

# THANK YOU TO OUR DONORS Jan. 1, 2015 to Feb. 29, 2016

Law Offices of Horan Lloyd \*  
Stein Lundby  
Craig & Carol Lundin  
Ms. Jennifer Martin  
Tom Shragg & Cecilia Martinez  
Grant Mastick  
Richard & Marjorie McCracken  
Spencer McNamara \*  
Robert Morton \*  
Mr. & Mrs. Paul C. Murphy  
Cameron & Marcia Murray \*  
Kevin & Donica O'Laughlin \*  
Ted & Sara Owens  
Mr. & Mrs. David Parsons \*  
Gail Paulin  
Michael J. Pease  
Pamela P. & Dr. Lewis Perez \*  
Michelle Rapp  
William Reller  
Mr. & Mrs. Benjamin Roberts \*  
Steven & Jennifer Ryder  
Page & Ferrell Sanders \*  
Ms. Emily Desfor & Mr. Jeff  
Schloss \*  
James Sherman  
Pamela Sherwood  
Danny Sierra  
Melissa & Steven Siig \*  
Barry & Bobbi Silberman  
Mrs. Sharon Smith \*  
Russell Snyder  
Sue Blockstein & Mike Sokolsky \*  
South Yuba Club  
Tom & Bobbi Specht  
Mr. & Mrs. David Stanley \*  
Mr. & Mrs. Brian Staskawicz \*  
Terry & Zoe Sternberg \*  
Eva Strnad  
John & Heather Svahn \*  
Sheila Toner  
Blake & Colombe Tresan \*  
Matthew, Elizabeth, Sadie &  
Joachim Tucker  
Ursack Inc  
Mr. & Mrs. Frits Vanderlinden  
Ms. Karen Andrews & Mr.  
Nelson Wakimoto  
Charles Walter  
Suzanne & James White  
John & Carol Whitelaw \*\*  
Mike & Lisa Wise - Wise  
Insurance \*  
Mr. & Mrs. William Wright  
Mr. & Mrs. Jan Zabriskie  
Mark Whatley & Danusia  
Zaroda \*  
Ron & Gisela Zech  
Jennifer Bailey & John Zeisler

## \$100 - \$249

Mr. David Achiro - Tahoe  
Truckee Sierra Disposal Co.

Carol Albers  
Josh Alwitt  
Richard Anderson \*  
Claudia & Steve Andersen  
- Parasol Community  
Foundation  
Erik Anderson  
Dr. & Mrs. Jim Andras \*  
Anonymous  
Mr. & Mrs. Dennis Argyres \*  
Margret Geselbracht & Thomas  
Armstrong \*  
Jonathan Arst  
Mr. & Mrs. Nick Arvanitidis \*  
Dr. Howard & Anita Backer \*\*  
Dr. & Mrs. Terry Baker \*  
Theodore Bannk  
Lorelle Banzett \*  
Alice Wong & Ryan Baum  
Mr. & Mrs. Byron Beagles  
Ms. Lynden Beale \*  
Mr. & Mrs. George Bechtel \*  
Arlene Becker  
Mr. & Mrs. Richard Beebe \*  
Drs. Susan Sanders & Ted  
Beedy  
Don & Lone Beeson  
Ms. Patty Lomanto & Mr.  
Robert Bell \*  
Douglas Bennett  
Steven & Mindy Benton  
Charles Betancourt  
Mr. & Mrs. John Henry & Sue  
Beyer  
The Bielke-Loll Family  
Kathy Depaola & Tim Bigalke  
Michael B & Geraldine Bigelow  
Dr. David & Gloria Billharz -  
Billharz Family Trust  
Russell & Mary Bishop  
Robert Bjekich  
Kenneth & Janet Blaedel  
Dr. Gregory & Dr. Dana Miller  
Blair \*  
Mr. & Mrs. Steven Blake \*  
Mr. & Mrs. Kent Bourquin -  
Bourquin Family Trust \*  
Mr. Edward Bouwhuis  
John & Ann Bowler  
Benjamin Brackett Memorial  
Fund  
Lary & Nancy Bradley  
Beverley Brahe  
Jack & Lynette Branagh  
Rick & Hope Brandsma  
Karen Brems  
Drs. Dave & Sally Brew \*  
William Brinckerhoff \*  
Marvin Brooks \*\*  
Mrs. Elizabeth R. Brown \*  
Bob Brown  
Michael & Susan Brugh -

Truckee Mercantile.com \*  
Jerry Buchanan \*  
Tanja Hester & Mark Bunge  
David Bunker  
Dorothy & Patricia Burden  
Boris Burkov  
Mr. & Mrs. Roderick Bushnell \*  
Michael & Donna Butcher  
Joe & Tanya Buxton  
Sarah Currier & John Coke  
Caccamo  
William Cadman - Tulocay  
Winery  
Stewart Campbell  
David & Andrea Campos  
Ross Capdeville  
Dr. James W. Carlin  
Ms. Carmen Carr \*  
Richard & Myrna Cartano \*\*  
Mary Corley & Pete Castro

Robert Cook  
Leslie Cooley \*  
Marion & Richard Cooper \*\*  
Mr. David Corbin  
David & Rosemary Cortopassi  
Mr. William Courchesne \*  
Dale Cox - Big Trout, Inc.  
James Coyle  
Mr. & Mrs. Tim Crandall \*  
Jon & Jodie Crase  
Kathleen & Robert Crawford \*  
Marcia Crockett  
Kathy & Chuck Cruse  
Jonathan Cunha  
Drs. Edmund & Barbara  
Czerwinski  
Katy & Ron Dalglish  
Mr. & Mrs. Dave Davini \*  
Pamela Raynak & Harold  
Dawson



Daron Rahlves shreds the Coldstream backcountry. Photo by Grant Barta.

Dr. Robert Cattolica \*  
Mr. Steve Catton \*  
Joel Steven & Janice Chaffin  
Robert Chapman  
Chinyu Chen  
John & Margaret Chiarenza \*\*  
Renee & Michael Child  
Leslie, Michael & Neil Chin \*\*  
Donna Chipps \*  
Louis Christian  
Kevin & Mary Clark  
Coast to Coast Fund \*  
Alan & Jan Coe \*  
James & Marie Colbert  
Mr. & Mrs. Frank Collin \*  
Thomas & Susan Collins  
Brent & Dianne Collinson \*\*  
Collinson & LaChance  
Attorneys at Law  
Mrs. Linda Common  
Mr. & Mrs. John Compisi  
Clarke Conant  
Dr. Miles & Patricia Congress  
Gary & Deborah Convis

Steve Dawson  
Fred & Ginger De Gregory  
Dr. & Mrs. Ralph De Vere White  
Denise Kahwajy & Bill Deasy  
Ms. Joan Dedo \*\*  
Shams & Kelly Deitrick  
William & Sarah Rosalee DeLacy  
\*\*  
Kent Deverell  
Kevin & Jennifer Dewald  
Mr. & Mrs. Jim Dobberstein  
Mr. & Mrs. John Donatoni \*\*  
Robert Donjacour  
Mr. & Mrs. Richard Dorais \*  
Marijo & Bruce Douglass  
Ms. Judy Dowdy \*  
Ms. Arlene Downing-Yaconelli  
Ms. Theresa May Duggan  
Daniel Dulitz  
Mr. Harrison Dunning \*  
Mrs. Iris Durland \*  
Bill & Diane Durston  
Deane & Patricia Dvoracek \*\*  
Thelia Eagan

# THANK YOU TO OUR DONORS Jan. 1, 2015 to Feb. 29, 2016

Mara Bresnick & Dan Eaton  
 Erik Eccles  
 Mr. & Mrs. Chester Eccles  
 Mr. & Mrs. Alan Edelstein  
 Mr. & Mrs. Mike Edminster \*  
 Debbie & Eric Efthimiou -  
 Alpine Home Design &  
 Construction  
 Dr. Nancy D. Elliot D.V.M.  
 Mr. & Mrs. Larry Ellis  
 Mr. & Mrs. Emil Erickson  
 Jon Erickson  
 Linus Eukel  
 Jephtha Evans  
 Leslie Evatz  
 Brad & Jenise Falk  
 Ms. Connie Fasani \*  
 Ms. Adele Faville  
 Bette & Jim Felton  
 Roger & Nancy Ferch  
 Mr. & Mrs. R. Larry Ferral \*  
 Diane Thurm & Scott Fickes \*  
 Dr. Amy Hecht & Michael Fine \*  
 Jeffrey Fisher  
 Mr. & Mrs. Paul Fitzgerald  
 Timothy & Diana Fitzpatrick \*  
 Curtis Oldenburg & Joan  
 Florsheim  
 Mr. & Mrs. Matthew N. Follett

Gabbart & Woods Tahoe  
 William Gage  
 Jim, Susan, Whit, Reed &  
 Kendra Gaither \*  
 Isabelle Geiger  
 Michael & Virginia Genovese  
 David & Linda George \*  
 Nancy & Max Gisko \*  
 Jennifer Glenesk  
 Mr. & Mrs. Ernest Gnos \*  
 Dr. Rolf Godon \*\*  
 Mr. & Ms. Daniel Goeschl \*  
 Mr. & Mrs. John Goodman  
 Georgene & Bob Goodstein  
 Jared Goor  
 Mr. Richard Gould  
 Patricia Graffis  
 Mr. & Mrs. Thomas Gray  
 Nancy Latimer & Mickey Gray  
 - Woodcraft Construction\*\*  
 Deborah Gray  
 Valerie Green \*  
 Donald M. Gregory Jr.  
 Herbert & Norma Grench \*  
 Mr. Terry Griffith  
 Sally & George Grigoriev  
 Filip Roos & Margaret Grover-  
 Roos  
 Mr. Paul Grunland \*

Mr. Ralph & Gillian Hayward  
 Mr & Mrs. John Helms  
 Courtney Hemphill  
 Mr. & Mrs. Thomas Hendrey  
 Edward & Laura Heneveld \*\*  
 Virginia Hestmark  
 John & Noelle Allen Hetz \*  
 Mr. & Mrs. Bob Hicks \*  
 Janice Hirata  
 Kenneth S. & Carolyn L.  
 Hodges  
 Michael & Debbie Hogan -  
 IERS  
 Mr. Jeffrey Holl \*\*  
 Michael Hollett  
 Mr. & Mrs. David Homrig  
 Steve & Margie Honegger \*\*  
 Mr. & Mrs. John Horsch  
 Loren Hostek  
 Dr. Marlene Mirassou & Mr.  
 Stephen Houlihan  
 John Hovell  
 Mr. & Mrs. Walter Huber \*\*  
 Jake & Lauren Hudson  
 Ralph & Barbara Christy Hunt \*\*  
 Ms. Nona Liang & Christopher  
 Hunt  
 Tad Hunt  
 Bruce & Libby Hutchinson  
 Vladimir Ivanovic  
 Jerome & Nancy Ives \*  
 Garth & Marcia Jacober \*  
 Ms. Arlene Jamar  
 Alfred & Bonnie Janssen  
 Mr. & Mrs. Robert  
 Jenkins  
 Marc Jensen  
 Ervin & Denise Jindrich \*  
 Claire & Larry Jinks \*  
 Edith & Glenn Jobe -  
 Glenn Jobe Appraisal  
 Service  
 Mr. & Mrs. William  
 Johnson  
 Brooke Johnson -  
 Adventures Cross Country  
 B.E. Johnson  
 Mr. & Mrs. Charlie & Mary  
 Jones  
 Max Jones  
 Hilary & Susan Jones \*  
 Sharon Jones  
 Ms. Linda Joplin \*  
 Michael & Susan Jordan \*\*  
 Micki Kelly & Mike Josselyn -  
 Kelly Biological Consulting \*  
 Robert & Monica Judson  
 Elizabeth Doherty & Adrian  
 Juncosa  
 Mr. & Mrs. Michael Kahn \*  
 Kevin & Diane Kane  
 Mr. Richard A. Kannisto

Lisa Kapellas  
 Karen Martin-Keller & David  
 Keller  
 Mrs. Yvonne E. Kerby-Miller \*  
 Amy King  
 Mr. Robert Kingsley \*  
 William G. & Diane I. Kirkham  
 Mr. & Mrs. Othmar Klay \*  
 Helen Bradley & Steven Kleiman  
 Ms. Joan Klein \*  
 Mr. & Mrs. Walter P. Knoepfel \*\*  
 Amy & Matthew Kohnman  
 Ms. Sandra Korth  
 Pavel Kovar  
 Mr. & Mrs. Jay Kreimer - The  
 Kreimer Family Trust \*  
 Beth & Dieter Krewedl  
 Bill & Chris Krissoff \*\*  
 George & Barbara Krusi  
 Mr. & Mrs. Wayne Kurlak \*\*  
 Harry Lalor \*  
 John & Donita Lane \*  
 Dr. Barton Lane  
 Ms. & Dr. Selora Albin & Steven  
 Lane  
 Mr. & Mrs. Andrew Lange \*  
 Nils & Marie Lang-Ree \*\*  
 Heather & Terry Larkin  
 Tony & Jan Lashbrook  
 Joshua & Laura Latimer  
 Mr. & Mrs. Byron Lee \*\*  
 Dottie Lee  
 Mr. & Mrs. Jerald & Mintie Lee  
 Steve Zieff & Elaine Leitner  
 Danielle Leonard  
 Charles Leung  
 Carol Levy  
 Dr. Richard & Robin Lewis \*  
 Mr. Donald E. Lewis  
 Mrs. Deborah Dun & Mr. John  
 Liddle \*  
 Paco & Carol Lindsay \*  
 Carolyn Link  
 Mr. & Mrs. Bob Link \*\*  
 Ted & Juliane Link-Oberstar  
 Robin Liu  
 Dr. & Mrs. Norman Livermore III  
 Mr. & Mrs. Steve Long \*  
 Kirk Lovejoy & Veronica Blake  
 Lovejoy  
 Hilda & Nelson Luke  
 Mr. & Mrs. Rob Lynch \*  
 Mr. & Mrs. David Lynch  
 Joan & Steve Lynch  
 Donald & Patricia Malberg \*\*  
 Steve Mardenfeld  
 Sherrin Grout & Donn  
 Marinovich  
 Mr. & Mrs. James Mart \*  
 Terry Martin  
 Robert Martin  
 Patsy McGaughy & Jack Marx



Family of Canada geese. Photo by Sue Johnson.

Mrs. Sharon Fong \*  
 Leigh Fong  
 Ms. Marilyn Foreman - The  
 Foreman Living Trust \*  
 Mr. & Mrs. Tom Foster  
 Dr. & Mrs. Scott Foster \*  
 Mr. & Mrs. Richard Fox  
 Leslie & Stephen Francis  
 Mr. Joe & Dr. Coni Francis  
 Mr. & Mrs. Mark Franich  
 Ms. Martha Frantz \*  
 Sarah A. Seitz, M.D. & R. Paul  
 Freitas, M.D.  
 Mr. & Mrs. Robert Frick  
 Dr. Peter & Susan Fry  
 Don Fulda  
 The Fuller Family \*

Mr. & Mrs. Robert Gudz  
 Jonathan Guy  
 Cathy & Jim Haagen-Smit \*  
 Paul Hail  
 Mr. Mike Haire  
 Jon & Julie Halvorsen  
 Mr. & Mrs. J.D. Hammons  
 David Hannah  
 Ms. Alice Hannam \*  
 Zeno Hao  
 Mr. & Mrs. Gary Harbison \*  
 Mr. & Mrs. Milton Hardyck \*  
 Mr. & Mrs. Robert Harms \*  
 David & Carole Harris  
 Mr. & Mrs. Alan Harris  
 Hartley Appraisal Services  
 Mr. & Mrs. Karl Haug



# THANK YOU TO OUR DONORS Jan. 1, 2015 to Feb. 29, 2016

Dr. Kevin & Janice Mc Kennan  
 Renee & John McAmis \*  
 John & Kathy McCorduck  
 Diane Young McCormack \*  
 Jack & Joni McCormick -  
 McCormick Realty \*\*  
 Ernie & Kathy McCoy  
 Theresa & Andrew McCullough  
 Mrs. Norma McGowan  
 Bill McGuire  
 Don & Lynn McKechnie \*  
 Dr. Lynn McLellan  
 Karen & EJ Melzer  
 John & Catherine Milbourn \*  
 Bob & Claire Miller  
 George & Brenda Milum \*  
 Paul Minault  
 Peter Minearo  
 Judith Minium  
 Nick & Darcy Mironov \*  
 Kevin Mitchell  
 Mr. & Mrs. Peter Mondavi -  
 Charles Krug Winery  
 Simon Moore  
 Michael, Jennifer & Paul Moran \*  
 Thomas Moreau  
 Linda Morris  
 John Morris  
 Marty & Don Mosman  
 Steve & Lee Ann Mott \*  
 Mr. Konrad Motzek \*  
 Ms. Sheila Mullins  
 Ms. Phyllis Munsey \*\*  
 Thomas Murphy \*  
 Rick Murphy  
 Mr. Michael Murray \*  
 Meg Theno & Herb Nelson  
 Michael Newark, CPA \*  
 Mr. Dann Newton  
 Mrs. Sheila Nichols \*  
 Sue & Ken Noack, Sr.  
 Ms. Kimberly Nolan  
 John & Rose Northrop  
 Northstar Community Services  
 District  
 Bart O'Brien  
 Brad & Judy O'Brien \*  
 Mr. & Mrs. Anita Ochiano  
 Mr. & Mrs. Charles Oldenburg \*\*  
 Lenny Oliker  
 Bob & Gingi Olstad  
 Mr. & Mrs. Brian O'Melveny  
 Matt O'Neil - Sitkoff O'Neil  
 Chris & Ed O'Neill  
 Mr. & Mrs. Richard Orsi \*  
 Kay & Monte Osborn  
 Paula Osenni  
 Tracy Ou  
 Robert Scott & Jane Owen \*  
 Christopher & Kay Parker  
 Captain David & Sarah Pate \*  
 Mr. Steve Paterson \*

Blair Paterson  
 Steve & Bruce Pauly \*  
 Dr. & Mrs. Mark Perthro  
 Matthew D. & Erin O. Perry  
 Mrs. Oliver Peter \*  
 David & Marie Peters  
 Janet Peterson  
 Les & Peggy Peterson  
 Michael & Susan Phelan \*  
 Anne Phillips  
 Mr. & Mrs. Graeme Plant  
 Michael & Rosalind Plishner \*\*  
 Mr. Glenn Polochko \*  
 Lauren O'Brien & Steven  
 Poncelet  
 Mr. C. Scott Powers \*  
 Lisa Prach  
 Mr. & Mrs. Ken Prager \*  
 Dave & Caroline Pratt \*  
 Mr. & Mrs. Lee Price \*  
 Matt Quann  
 Vicente Bonnard & Gale Rankin  
 \*  
 Scott Rapp - Adventure Maps  
 Steve Rebscher  
 Michael & Roberta Rei \*\*  
 Mr. & Mrs. Ken Reid  
 Corey Rich  
 Alfred & Dorothy Rincon  
 Eric & Elaine Ring \*  
 Kathleen Riolo  
 Mr. & Mrs. Jerry Risk  
 Nancy Robinson  
 Mr. Robert Roche \*\*  
 Gerald & Mary Jane Rockwell \*  
 Alexander & Britta Mackey  
 Rogerson \*  
 Karen Ury & Carl Rogge  
 Mr. & Mrs. Mike Rogina \*  
 Erik & Deborah Rogind  
 Judith Rohlff Grandchildren  
 Endowment Fund - Tahoe  
 Truckee Community  
 Foundation  
 Mr. Richard Rohlff \*  
 Ellen Marie Roland  
 Robert & Patricia Ronald \*  
 Charles Rosenblum  
 Brent Rosenquist  
 Peter Rostin  
 Ann Rouse  
 Patricia Rowe  
 Ken & Nancy Rudin  
 Mr. & Mrs. Bob Ruffner \*  
 James & Elizabeth Rushforth  
 Kenneth Russell  
 Thomas & Jill Sampson \*  
 Gail & John Sande III \*  
 Amy Santullo  
 Paul Sassenrath & Family \*\*  
 Teebie & Jamie Saunders  
 Mr. & Mrs. Bill Schmidt \*



Aspens.

Mary & Mike Schrupp  
 Julie Faisst & Mark Schwartz \*  
 Barbara Schwartz  
 Scott Family Fund  
 Karen Seaward  
 Eric & Annie Seelenfreund \*  
 Robert & Jean Segale \*  
 Kathy Semrad  
 Milada Senna  
 Gabe & Kim Shacter  
 Mr. & Mrs. Whitney Shane  
 Mr. & Mrs. Herm Shaver \*  
 Lorraine Shea  
 Alison Shelling  
 John Shepard  
 Mr. & Mrs. Earl Shirley \*  
 The John & Josephine Shuman  
 Fund  
 Dr. & Ms. Jerry Silverberg  
 Ms. Naomi Silvergleid \*  
 Mr. & Mrs. Michael Simmons  
 Judith Simon  
 Beverly Singer \*  
 Mr. & Mrs. Denise Pinkston &  
 Jeffrey Sinsheimer  
 Bob & Connie Skidmore  
 Karen Patria Slusser  
 Mr. & Mrs. Mark & Marcy Helm  
 Smallen  
 Larry & Barbara Smilie  
 Winifred Clegg Smith \*  
 Margaret Snively  
 Abraham & Marian Scheuer  
 Sofaer \*  
 Catherine Soriano  
 Mike & Carol Spiering  
 St. Patrick's Episcopal Church  
 Gregory Stach  
 James Stamos  
 Jim & Lydia Stang  
 Ms. Kristin Starmer  
 Philip & Grace Starr  
 Mark Stebbins \*  
 Matthew Stein  
 Lucy K. Stein

Dr. David & Judie Stepner  
 Bill & Jodi Sterling  
 Dr. & Mrs. Walter Stern  
 Laura Stern  
 Joyce Stewart \*  
 Mr. & Mrs. Donald Sudnikoff  
 Ralph & Brenda Suter \*\*  
 Gerlinde Trombino & Jerry  
 Swearingen  
 Thomas & Stephanie Szymoniak  
 Ms. Brita Tryggvi & Mr. Art Takaki \*  
 Eliot & Christine Terborgh \*  
 Dr. Richard Terry \*  
 Clark Terry  
 Jackie Thomas  
 Mr. & Mrs. Guy Thomsen  
 Eszter Tompos  
 Mr. & Mrs. Marilynn & Bob  
 Trounson  
 Tony & Ann Trutner  
 Michael Tsoi  
 Mr. & Mrs. Frederick Tuemmler \*\*  
 Dr. & Mrs. Tim Tweedie \*  
 Mr. Col. William & Christina Tweedie  
 Dr. & Mrs. Russel Tweet \*  
 Mrs. Katie Tyler - Surprise Valley  
 Enterprises Inc.  
 Mr. Michael & Bonnie Jean Ueltzen  
 Mr. & Mrs. Glenn & Jean Urban  
 Amanda Williamsen & Bradley Urban  
 Nick, Kit & Steve Urbani  
 Mr. & Mrs. Royce Van Bebber  
 Melani Van Petten  
 William Viner  
 Dr. John & Mary Lee Wachtel  
 Walter Wadlow  
 Brock Wagstaff  
 Roxanne Duffield & Hans Wain -  
 State Farm Insurance \*  
 Mr. & Mrs. Erik Walberg \*  
 Mr. & Mrs. Laurence Walker  
 Mary Wallace  
 Bob & Deanna Wargowski \*\*  
 Paul & Maureen Warmerdam  
 Mr. & Mrs. Robert Warren \*

# THANK YOU TO OUR DONORS Jan. 1, 2015 to Feb. 29, 2016

Mr. Tom Watson - Truckee River Associates \*  
 Katrine Watson - Chase International \*  
 Joan Wauters  
 John Weir  
 Mrs. Carol & Col. William Welker \*  
 Knute Anscomb & Peter Werbel \*  
 Mr. & Mrs. Jim Westphal \*  
 Mr. & Mrs. Morgan White \*  
 Mr. & Mrs. Robert White  
 Michael Wickett  
 Larry & Margaret Williams  
 Mr. & Mrs. Michael Wilson \*\*  
 Mary Jess Wilson  
 Marilee Wintz  
 Mrs. Jane Witter \*  
 Ms. Helen Wolfe  
 David & Sheila Woods \*  
 Glenn & Leota Woods  
 Harry & Karen Wyeth  
 David Yee  
 Aaron Zanto  
 Linda Zarzana  
 Dr. Matthew & Mrs. Lauri Zealear  
 Corinne Ong & Dawit Zeleke  
 Bonnie & Jim Zellers \*  
 Michael Chaplin & Diane Zelman \*  
 Lauren Ziegler  
 Mr. Daniel J. Zimmerlin  
 Dennis E. Zirbel, Architect \*

## \$50 - \$99

Cara Abraham  
 Duke & Sally Ackerman

Dawn Alguard  
 Mr. & Mrs. Jerry Anderson \*  
 Mrs. Ward Anderson \*  
 Anonymous  
 Tom & Jeanne Appelbaum  
 Betty Ariza  
 Mr. & Mrs. Johnny Ashcraft \*  
 Mrs. Cynthia Atkin  
 Michelle Au  
 William Ball  
 Jeffrey Barker  
 Mr. & Mrs. George Barnes \*  
 Jackson & Karen Barney  
 Mrs. Joan Beahm \*  
 David & Louise Beesley  
 Mr. Jack M. Beggs  
 Don Bennett \*  
 Anne Biagini \*  
 Jon Bielik  
 Roslyn & Arthur Bienenstock  
 Mr. & Mrs. Stan Bienus \*  
 Anonymous \*  
 Ms. Lory Billeter \*  
 Mr. & Mrs. Donald Bixby  
 Carolisa Blesse  
 Dr. Spencer & Mrs. Judy Bloch \*  
 Gary Boxeth  
 Bill Boyd  
 Maureen & Rick Bragdon  
 Ifrane Brennan  
 Randall Brown  
 Ed & Kathy Bubnis  
 Dung Bui  
 Mr. & Mrs. Russell Burgess  
 Matthew Burt  
 Mr. & Mrs. Dale Bush \*

Frances Callahan  
 Ed & Meg Candler  
 Mrs. & Mr. Kevin Carroll  
 Julie S. Carville  
 Kathryn Chew  
 Tommy Chheng  
 Robert Coenen  
 Elaine Coppernoll  
 Sean Corcoran  
 Charles Cornwall  
 Nancy & Fred Cotton  
 Debra Nicholson Craig  
 Amanda Croft  
 W. Bruce Culbertson \*  
 Mrs. Diane Curtis \*  
 Merrilee Dadaos  
 Colin Davidson  
 Emma L. Davis  
 Rachel & Crash Davis  
 Eric Davis  
 Matthew Delheimer  
 Robin Denegri  
 Paul Denzler  
 Terence Dewane  
 Ms. Janice Didriksen  
 Mr. & Mrs. Howard Dienger  
 Alice Tenscher Dunbar \*  
 Mr. & Mrs. John Echols \*  
 William & Roxanne Edelen  
 Anthony Edwards  
 Mr. & Mrs. Dan Eggen \*\*  
 Melissa & Dominic Eisinger  
 Desmond & Alison Elder  
 Elizabeth & Matt Evans  
 Jeff & Maria Fahrner  
 Keith & Ginny Fogg \*  
 Foothill Hikers  
 William & Marilyn Forni  
 Marianne & James Franks  
 James Gaffney  
 Mr. & Mrs. JD Garcia  
 Carole Kelsch & George Garcia  
 Lisa Gee  
 Matthew Gelso III  
 Gary Giannini \*  
 Gianfranco Giometti  
 Mr. & Mrs. Steve Giandomenica  
 Mary Gleim  
 Doris & Tom Gorin  
 Ben Grasseschi  
 Drs. John & Deborah Greenspan \*\*  
 Thomas & Sandra Goldman  
 Max & Mary Gutierrez Jr.  
 Mr. & Mrs. Mike Hafer \*  
 Virginia Haliwell  
 Mr. & Mrs. Michael Hamilton  
 Mr. & Mrs. Joseph Hannon \*  
 Emily Harris  
 Mr. & Mrs. Dou Hartelt

Mrs. Georgia Bianchi Heald \*\*  
 Mr. & Mrs. Willie Hector \*  
 Mr. & Mrs. Hilary & Jan Hedman  
 Barb Henderson  
 Daniel Hennage  
 Mr. Gerald W. Herrick  
 Mr. William C. Hersh  
 Dr. & Mrs. Milo Hewitt \*\*  
 Susan Hida  
 Kern Hildebrand  
 Peter & Linda Hoch  
 Ms. Therese Iknoian & Mr. Michael Hodgson  
 Lisa & Jan Holan  
 Laura, Ian & Eric Holl  
 Maiya Holliday  
 Mark Holmstrom  
 Joseph Hopfield  
 Vic & Kathy Hopner \*  
 The Howes Family  
 Mr. Miles Huber  
 Mr. & Mrs. Andrew Hunter  
 Carolos Hwa  
 Mr. & Mrs. Donald Hyatt \*\*  
 Stephen Imai  
 Mr. & Mrs. Sebastyen Jackovics  
 David Jaffe  
 Ruth Johanson  
 Scott Johns  
 Mr. & Mrs. Tom Johns  
 Ms. Liz Schindler Johnson  
 David & Roberta Johnson  
 Morgan Jones  
 Dr. Jim & Mrs. Casey Kaneko  
 Claire Kaufman  
 Michael Kavanaugh  
 Samantha Keh  
 Mr. & Mrs. Jerry Keyser  
 Ki Kim  
 Edgar & Joy Kimball  
 Mary Knox  
 Kathryn Nyrop & Stephen & Nicholas Koch  
 Kim Kuehnert  
 Karen Latorra  
 Andrea Laue  
 Simon Le Parc  
 Mr. & Mrs. Justus Leachman  
 Carrie Levin  
 Mr. & Mrs. Dale Lindley \*  
 Mr. & Mrs. Tom Lippert \*  
 Steve & Jodie Litster  
 Lydia Mendoza & Henry P. Little \*  
 Andrew & Beverly Littorno  
 Kenneth & Janet Long  
 Paul Louden  
 Mr. & Mrs. Bruce Lucia  
 Mr. & Mrs. Charles Luckhardt \*  
 Chris MacIntosh



Skier carving turns while heading to Donner Summit Canyon. Photo by Grant Barta.

# THANK YOU TO OUR DONORS Jan. 1, 2015 to Feb. 29, 2016

Paul Manangan  
 Mr. Robert Maples \*  
 Mrs. Beverly Martin  
 Richard & Phyllis McConn  
 Douglas & Fredricka  
 McGlashan \*  
 Michael McGunagle  
 Patrick & Kathie Mead  
 Gabriel Metzger  
 Jonathan Meyerholz  
 Sara Michie  
 Mrs. Daniel Miller \*  
 Mr. & Mrs. James Miller  
 Mr. & Mrs. Paul Minor \*  
 Eugene Mock  
 Crisler Moor  
 Timothy Moreau  
 Dr. Robert Morrey  
 Ms. Nancee Murray  
 Mr. & Mrs. Henry J. Nagao \*  
 Ms. Margaret Nance  
 Michael & Colette Needham \*  
 Andrew Newman  
 Marian & Bob Nielsen  
 Mr. & Mrs. Carl Norum \*\*  
 Ysbrand Nusse  
 Stephen D. O'Brien  
 Carl & Mary Anton Oldenburg  
 Erik Olhoffer  
 Adriana Olson  
 Marcia Spector & Rodney  
 Omachi  
 Carl & Helen Ondry \*  
 Matthew Ouellette  
 Neil Patil  
 Jeremy Perera  
 Mike DeClement & Jennifer  
 Perga  
 Michael Plapp  
 Tom & Peggy Prescott \*  
 Bruce & Trudy Presser  
 Suzanne Pritchett  
 Steve & Leta Rabenstine  
 Randor Radakovits  
 Mrs. Carole Raisbeck  
 Marc Rayacich \*  
 Robert & Susan Reisfelt \*  
 Mr. David Reneau  
 Dr. & Mrs. Robert Richardson \*  
 Dana & Joel Richnak  
 Maximilian Richter  
 Bob & Cheryl Riopel  
 Keith Ristinen  
 River Ranch Lodge  
 Gerald & Antoinette Rockwell  
 Vivian Nelson & Bill Roller \*  
 Michael & Kathleen Roman \*  
 Patrick Ryan  
 Mr. Bob Ryder \*  
 Rob Rynski  
 Mr. & Mrs. James Sarrail

Catherine Schnurrenberger  
 Randy Diaz & Jack Schwartz  
 Kathleen Schwartz  
 Ms. Pamela Schwarz \*  
 Ms. JoAnn Semas \*  
 Ken & Barbara Serwin  
 Mr. Albert T. Shaw  
 Mr. Charles Shepperd  
 Drs. Nancy Lazarus & David  
 Siegel \*  
 Mr. & Mrs. Michael Silvestri \*  
 Teresa Slevin  
 Mr. & Mrs. Benjamin Smith  
 Ms. Melissa Smith  
 Mr. & Mrs. Dale Smith  
 Ryan Smith  
 Kurt & Susan Snover  
 Mr. & Mrs. Larry Soderman  
 Mrs. Kathy Spagnolo  
 Scott Sporn  
 John St. Germain  
 Hans Standteiner  
 Kelsay Stanton  
 Thomas Stargaard  
 Mrs. Johanna Stek  
 Kathleen H. Stephens  
 Victor Jew & Jacqueline Stoll  
 Donovan Sweet  
 Tamarack of Sacramento  
 R. S. Tavenner  
 Mr. & Mrs. William Tellman  
 Leanna & Brad Thomas  
 Clarence Thost  
 Mr. & Mrs. Frank Tobin  
 Bette & Richard Treiman \*  
 Drs. Daniel & Janis Tuerk \*  
 Richard & Elizabeth Tyree &  
 Family  
 Jenyth Gearhart Utchen  
 Linnet Vacha  
 Mr. Maxime Vaillant  
 Jennifer Van Fleet  
 Nelson Van Gundy  
 James & Ellen Van Winkle  
 Evor & Peri Vattuone \*  
 Mike Vierow  
 Megan von Feldt  
 Ms. Lucia Wade  
 John Wagner  
 Dan Warren  
 Layton Wedgeworth  
 The Werner Family  
 Ed Wetherell  
 Thomas Wetherell  
 Louise Wholey  
 Seth Whynaucht  
 Mr. Howard Williams  
 Mr. & Mrs. Lorenzo Worster  
 Mrs. LaVonne Wuertz \*  
 Mr. John Wyatt  
 Julie & Craig Wyreman

Doug Yule  
 Mrs. Nancy Zachariasen \*  
 Johann Zaroli  
 John & Johanna Zee  
 Mrs. Mary Conroy & Mr. Gary  
 Zouzoulas \*

## Under \$50

Susan Abeloe  
 Gary Allan  
 Mr. Matthew R. Anderson  
 Owen & Cathy Anderson-  
 Meyers  
 Emily Andrews  
 Trish Ang  
 Anonymous  
 Kuno Anselm  
 Lisa Bao  
 Andrew Becker  
 Sandra Bedient  
 Dick & Diane Behrle

Trevor Cornwell  
 Ms. Marilyn Crang \*  
 Michael Culhane  
 Robert K. & Patricia A. Dahl  
 Steve Day - Summit Drywall  
 Jacob Dayley  
 Carole Dearholt  
 Mr. & Mrs. Jeffery Deaton - Alhouse-  
 Deaton Management & Leasing  
 Robin Delaney  
 Ms. Linda Della  
 Peter DellaVecchia  
 Corinne DeLuca  
 Frank & Jennie Desmond \*  
 Donald & Noel Dickey  
 Cathy Do  
 Sue Ann Donegan  
 Mr. & Mrs. William Dosch  
 Francesca Drake  
 Hunter Dudley  
 Marcus Duvoisin



Purple pestemon in Coppins Meadow. Photo by Fran Herbst.

Antonina Belorusets  
 Alison Bermant  
 Jerry Blackwill  
 Mr. & Mrs. Bruce Bolinger  
 Jon & Helen Bond  
 Nikita Borodikhin  
 Susan Collins & Edward Bower \*  
 Dylan Boyle  
 Jean Brooks  
 Serin Bussell  
 Mr. & Mrs. Dennis Campbell  
 Betsy Carpenter \*  
 Kristan Carver  
 Steve & Robin Cavagnolo  
 Lydia Choy  
 Laine Christman  
 Art Clark  
 Ed & Edna Colloff  
 Linda Conklin \*  
 Jessica Connolly

Andrew & Louise Dyken  
 Mr. & Mrs. John D. Edgcomb  
 Mrs. John Edginton \*  
 Rob Eskridge  
 Robin Reese & Bill Fakes  
 Ms. Judith Fasani  
 Mr. & Mrs. David Fielding \*  
 Sandra Finegan  
 James Fletter  
 Stewart & Barbara Foreman  
 The Schwartz Family  
 Foundation, Inc.  
 The Stephen Franks Family \*  
 Stephen Franz  
 Karyn Freested  
 Nina Friedman  
 David Frissyn  
 Susan Sabin & Jim Garrissere  
 Mr. Alan Gauld  
 Ken Geil  
 Ms. Lisa Jay Gelfand \*

# THANK YOU TO OUR DONORS Jan. 1, 2015 to Feb. 29, 2016

Matt Gibely  
 Howard Goldberg  
 Mr. & Mrs. Michael Good  
 Mr. & Mrs. Peter Graf \*  
 Mr. & Mrs. James Gribble  
 Sandy & Bill Haley  
 Kelly Halpin  
 Richard & Cheryl Harper \*  
 Ms. Babette Hauelsen \*  
 Robert Hawkins  
 Dave Hays  
 Ms. Patty Heck \*  
 Thomas Heinrichs  
 Susan Hellyer  
 Robert & Martha Helseth \*\*  
 Cameron Hempstead  
 Jerry Henderson  
 David & Alison Hennig  
 Sandie Hersh  
 Mr. Bruce & Kristin Hewett  
 Anthony Ho  
 Milton & Mary Hoever  
 Ray Holstead  
 Ms. Kathleen L. Horan, M.D.  
 Shanna Hoversten  
 Mr. & Mrs. Philip Hudner \*\*

Mrs. Blanche Kerrigan  
 Gabriel Kirtz  
 Mr. & Mrs. Kevin Klein  
 Helmut & Undine Krauss \*  
 Jedidiah Kravitz  
 Richard & Sharon Kreutzen  
 Ms. Valerie Lambertson \*  
 Adam Lee  
 Herbert Lee  
 Mr. & Mrs. Gary Leopold  
 Mordy Levine  
 Susan Marcus & Ross Libenson  
 Wendy Seppi Light & Douglas Light  
 The Lodge at Tahoe Donner  
 Nicole, Steve, Roger, Michele,  
 Janet & Kenneth Long  
 Celia Howe & Peggy Longo -  
 Backstreet Framers  
 Michael Lopez  
 Cayton & Isaac Lopez  
 Daphne Lowe  
 Timothy Lundgren  
 Sheree & Richard Luttrell  
 Barbara Farrell & Bob Maddison  
 Cody Mansell

John & Jeanni Meyer  
 Timm Michaud  
 Natalie Miller  
 Mr. & Mrs. Bryan Miller  
 Alan Miller  
 Mr. & Mrs. John & Judy Miller-  
 Poremba  
 Janis & Jared Miyamoto Mills  
 Barbara & Ed Montgomery  
 Garry & Kristi Morgan  
 Michael Morrison  
 Jim Morrison \*  
 Gregory Morrone  
 David E. & Yvonne M.  
 Newhouse  
 Vien Nguyen  
 Norm Nicholls  
 Damien Nicodemi  
 Mr. Roger Nixon  
 Ms. Corinne Oakes  
 Paul & Mindy Oesterman -  
 Donner Lake Inn Bed &  
 Breakfast  
 Mr. Bob Brown & Ms. Su-Moon  
 Paik \*  
 Thomas Paschos

Colleen Slattery  
 Amazon Smile  
 Mr. & Mrs. Dwight Smith  
 Dr. Karen Smith  
 David K. Smith  
 Mr. Lawrence C. Smith  
 Mr. Donald Snider \*\*  
 Del, Jane & Jennifer Frances &  
 Andrew Sniderman  
 Darrel & Elaine Snyder \*  
 Christopher Spalding  
 Mr. Peter Standish-Lee  
 Kevin Starr  
 Barbara E. Sullivan \*  
 Laurie Sweeney  
 Mr. & Mrs. Patrick Taylor \*  
 The Taylor Family  
 Mike & Liz Tebbutt  
 Lauren Thomasberger  
 Lisa Allowitz- Thompson  
 Lindsey Tjian  
 John Topping  
 John-Mark Toth  
 Sarah Trebilcock \*  
 Michael Trotter  
 KV Van Lom  
 Justin Vandever  
 Georgia Veeh  
 Christina Vetter  
 Ms. Jane Voss \*  
 Carol Walsh  
 Michael Warburton  
 Shannon Warner  
 Nancy & Steven Wasserman \*  
 Linda & Glenn Wegner  
 Kay Whipp  
 Ellen McGlynn & Steve Wilbur  
 Marty Williams  
 Kristi Williams  
 Dr. Margo & Claude Williamson  
 Glee Willis \*  
 Mr. Alan Wilmunder \*\*  
 Ms. Maral Wingo \*  
 Mrs. Irene Winter  
 Dr. Norman Kahn & Diana  
 Winyard \*  
 Ashley Wiseman  
 Brian Wong  
 Colin Wood  
 Mr. & Mrs. Jerry Wood  
 Steven Wright  
 Matt Yamamoto  
 Nicole Yoblonski  
 Wallace Young  
 Ms. C. Denise Ziganti \*  
 Pavel Zryumov



Schallenger Ridge. Photo by Susan Johnson.

Dr. Heather Hudson  
 Laura & Peter Hueber  
 Tom & Linda Hunter  
 Rodolfo & Mary Jacuzzi \*  
 Mr. Allen Jefferis  
 Mr. & Mrs. Gilbert Jensen \*  
 Barbara Jensen  
 David Johnson  
 Indigo Johnson  
 David Jones  
 Mr. & Mrs. Norm Justesen \*  
 Linda & Greg Kannall

Joshua Marcum  
 Ms. Kathlee Martin  
 Neal & Virginia Martin  
 James Martin  
 Madelaine Martin  
 Mr. Philip Matthews \*  
 Betty & James T. McClaskey  
 Mr. Robert McCormick  
 Connor McCracken  
 Ms. Janet McMartin  
 Mr. & Mrs. Reinhard Mechelke \*  
 Paul Metzker

Rodriguez  
 Wendy Rogers  
 Benjamin Rollin  
 Aileene & Robert Roth  
 Martin & Peggy Rubenstein  
 Craig Russell  
 Peg Rutt \*\*  
 Mr. & Mrs. Louis Salaber \*  
 Larry Scritchfield  
 Robert Sheldon  
 Chase Shimmin  
 Mr. & Mrs. William Sims

We apologize for any errors in these acknowledgements. Call us at 530-582-4711 if you have any corrections.

# SPECIAL TRIBUTE GIFTS

The Land Trust gratefully acknowledges the many individuals, businesses, and foundations that made gifts to the Land Trust in honor or in memory of a loved one from January 1, 2015 to February 29, 2016. These gifts are a wonderful way to pay tribute to a person's love of the Truckee Donner region.

## Gifts in honor of:

Brendan Allan  
 William & Trudy Ausfahl  
 Claire Briggs Benton  
 Annika, Conner & Tanner Burks  
 Sam & Kara Caven  
 Emily Caveness  
 Anne Chadwick  
 Kaia A. Chapman  
 Kaia Chapman  
 Stephen Christensen  
 Jeff & Gwen Cole  
 Bob Beno & Erisa Coppernoll  
 Hartley Family  
 Christopher Fowler & Family  
 Frank Galli & Lisa Querimit  
 Nick Gerrard  
 Marshall Gordon  
 Barbara Green  
 Dylan & Lana Greenberg  
 Tyler Greene  
 Geoff Griffin  
 Scott Growdon & Jill Zwagerman &  
 Mark & Martha Growden  
 Matt Hanson  
 Meg Seifert & The Headworkers  
 Heather  
 Hipcamp  
 Mrs. Amy Hobbs-Sutter  
 Larry Holmstrom  
 Nona Liang & Chris Hunt  
 Maggie Hyl&  
 Sam Caven Kara Muraki  
 Rob Kautz's Retirement  
 Christopher King  
 Hannah & Maggie Krieg  
 Monet Lane  
 Robert P. Lawrence  
 Steve & Tamara Lieberman  
 Nancy Link  
 Dave & Marsha Lose  
 Tom McCampbell  
 Garrett McCullough  
 Rachel McCullough  
 The Meyers Family  
 Nate Pelczar & David Moreno  
 Thomas Morton  
 Jesse Nichols  
 Jake & Torrey Palmer  
 Point Blue Conservation Science  
 John Pope  
 Michael B. Brown & Rosa Davis  
 Max Rosenblum  
 Laura & Mike Ryan

Michael Sabarese  
 SLPOA's 50th Anniversary  
 Lisa Conrad & Cruz Snover  
 Nicky Stenton  
 Bill Thauvette  
 Glenn Urban  
 Katie & Joe Veni  
 Maral Wingo  
 Peter, Knute, Tom E, Debbie, Carla,  
 Thomas, Tim & Celia

## Gifts in memory of:

Gwen Alguard  
 Larry & Marshall Bean  
 Emo Biagini  
 Angela Booras  
 Benjamin Brackett  
 Joel Brody  
 Owen Brough  
 William David Brown  
 Jacklyn Burchill  
 Lorenz P. Caspar  
 Amy Chamberlain  
 Mildred H. Chin  
 Robert Clifford  
 Cokie  
 Patricia Crow  
 Betty Ann Devault  
 Gene Drake  
 Alice S. Duff  
 Bill Durl  
 Bill Edmiston  
 Don Foreman  
 Stephen Franks  
 Millicent Frederick  
 Mr. French  
 Richard T. French  
 Helen & Ken Girling  
 Donna Gould  
 William & Joy Hail  
 Bill Hauck  
 Carl Heintze  
 Paula Herzig  
 Suzy Himelstein  
 Tim Holl  
 Adrian Howes  
 Hadley Marie Hubbard  
 Greg Jacobs  
 Ted Johanson  
 Ms. Joanne Kershaw  
 Patricia & Peter Kleis  
 Bill & Lillian Kor&a  
 1st Lt. Nathan Krissoff, USMC  
 Irving Krulevitch

Paul Kryska  
 Bob Lambertson  
 Jack Larsen  
 Ann Lashbrook  
 Lassen "Our golden dog"  
 Henry R. Laughlin  
 Alvina Lyons  
 Ray & Pat Malaspina  
 Judge John Marlo  
 Bob Martin  
 Bill Mayorga  
 Donald C. McCormack  
 Edward McGowan  
 Keri R. Miller  
 Nick Moll  
 Mom & Dad  
 Ken Moon  
 Sean Noonan Moylan  
 My Father who took me to Webber Lake in  
 the early 50's.  
 David Nason  
 Chris & Sherilyn Nelson  
 Albert Nugue  
 Brian Osenni  
 Kenneth H. Paulin  
 Oliver B. Peter  
 Dean Potter  
 Dr. Clifford C. Raisbeck, Jr.  
 Roberta Rei  
 Ward Richard  
 Nancy P. Ritchey  
 Janet Roudnev  
 Matt Rusanoff  
 Ellen Russell  
 Ethel Sassenrath  
 Jack Scanlon Jr.  
 Jim Sesser  
 Jennifer Shaw Crosby  
 Rena Smilkstein  
 Bob Snively  
 Trish Strickl  
 Mark "Sully" Sullivan  
 Mary Summers  
 Esther Marilou Svahn  
 Bryant Tan  
 John Michael Towey  
 Tim Treacy  
 Kathryn Ruth Jahnke Van Gundy  
 Kathryn Van Gundy  
 Eleanor Claire Cramer Weir  
 Edward J. Weller  
 Alberta Wilmunder  
 Chris Woodward  
 Katy Zirbel  
 Izzy

# SUPPORTING OUR COMMUNITY

## 18th Annual Yuba River Cleanup

Last fall, the Land Trust was proud to sponsor the 18th Annual Yuba River Cleanup with the South Yuba River Citizen's League (SYRCL). It was a record year in participation where 761 volunteers were marshalled to remove 15,000 pounds of trash and recyclables from 80 miles of river, creek, and lake shoreline within the Yuba and Bear River watersheds.



Peter Mayfield and students from The Gateway Mountain Center with a load of recyclables removed from Van Norden Meadow.

The Land Trust partnered with Donner Summit volunteers, the Donner Summit Area Association, and The Gateway Mountain Center to remove trash from Van Norden Meadow and Castle Creek. Thanks to SYRCL and the volunteers for your annual care of our watershed.

## Students Conduct Research at Van Norden Meadow

Youth from all over Northern California studied biology and hydrology in Van Norden Meadow through programs of the Headwaters Science Institute and The Gateway Mountain Center.



Truckee High School Students prepare to collect macro-invertebrates for study. Photo by Headwaters Science Institute.

## Thanks From the Kids at Sagehen

Each year, 5th grade students from Truckee schools come to the Sagehen Field Station to learn about the amazing biodiversity and natural history of the Northern Sierra. The Land Trust has provided scholarships for several years.



A much-appreciated thank you. Photo by Kathy Echols.

## Finally, Snow for High School PE Program

In 2012, the Land Trust donated cross-country ski gear acquired with the Royal Gorge purchase, to Loyalton High School in Sierra County. Thanks to a great winter finally, and with additional donations by Glenn Jobe and Mountain Hardware Truckee, the Loyalton High School PE programs now have a Nordic Ski Unit!



Cheers from the LHS Nordic Ski Unit. Photo by Emily Lares.

Looking for the perfect gift for someone who seems to have everything? Give the gift of open space for all occasions.

A special tribute gift is a thoughtful way to show your friends and family how much you care about them and the environment.

Visit [www.tdlandtrust.org](http://www.tdlandtrust.org) and click on "Donate Now."

# MAKE THE MOST OF YOUR VISIT TO A LAND TRUST PROPERTY

The Land Trust's website has a wealth of information to plan your visit to any of our properties and to learn where you want to explore next! Go to [www.tdlandtrust.org](http://www.tdlandtrust.org) and click on **Plan Your Visit** on the main navigation bar.

Not only will you find our suggested outings, you will find information on Trails by Interest, such as:

- Kid-friendly
- Birding
- Wildflowers
- Specialty Hikes
- Winter Wonderlands
- Mountain Biking
- Equestrian
- Dog Friendly
- Easy Access

Each recreation page has:

- Acquisition background
- What to do there
- How to get there
- A 'cool factor' about the property
- Other Land Trust properties in the area
- Additional history
- Trail specifics
- Downloadable map



All of our Plan Your Visit pages have a downloadable map like this one.

## Thank You to our In-Kind Partners

- Alpenglow Sports
- Alpine Skills International
- Alta Group, Inc.
- The Back Country
- Lyn Barraza
- Phebe Bell & Billy McCullough
- Brian Biega
- Black Diamond
- The Brewing Lair
- Tommy Caldwell
- California 89
- DMB/Highlands Group, LLC
- Hans Florine
- David Galson
- Dave Hatchett
- Mark Hudon
- John Jackson
- Max Jones
- La Sportiva
- Law Office of Thomas S. Archer, APC
- Mickey Lloyd
- Peter Mayfield
- Gabe Metzger
- Mountain Hardware and Sports
- Dave Nettle
- The North Face
- Dennis Pagonis
- Patagonia, Reno Store
- Paul Hastings
- Eric Perlman Productions
- Pipe Works
- Planet Granite
- Red Truck
- REI
- Eric Sloan
- Tahoe Sports Hub
- Jim Thornburg
- Uncorked Truckee
- Vail Resorts Charitable Fund
- Dennis E. Zirbel, Architect

# TRAILBUILDING UPDATE

Another active year of trail construction and maintenance is in the works. In addition to removing fallen trees and completing maintenance on over 25 miles of existing trails, the Land Trust is opening a new trail, completing another, beginning a third, and planning a fourth and fifth!

The new trail opening this summer is located in Perazzo Meadows. This trail meanders along the Little Truckee River and provides several river access points. From the river the trail ventures south to the Henness Pass Road and its terminus near the Mt. Lola Trail trailhead. The trail is accessed at the Land Trust's Perazzo Meadows picnic area.

The Land Trust intends to complete the Walter and Esther Hewlett Royal Gorge Rim Trail by autumn. Some final tweaks in the design will utilize less ski trails, replacing the ski trail segments with new single track. This trail will have incredible views of Castle Peak, the Granite Chief Wilderness, the Royal Gorge, and will be roughly 15 miles in length.

In partnership with the Truckee Trails Foundation, construction will begin on the Elizabethtown Meadows Trail, a new trail linking Waddle Ranch Preserve with the Northstar Drive traffic signal. En route, the trail will cross Middle and East Martis Creeks and beautiful Elizabethtown Meadows.

Lastly, Land Trust staff and volunteers will begin to design two new trails: A loop trail in Carpenter Valley

and an access trail in Billy Mack Canyon. The access trail will connect the popular climbing areas of Black Wall and Babylon Dome with a new trailhead at the junction of Donner Pass Road and Billy Mack Canyon.

## 2016 Trailbuilding Dates:

Trailbuilding is scheduled on various properties throughout the season. Dates may change. Be sure to check the Land Trust's Facebook page or [www.tdlandtrust.org/news-events](http://www.tdlandtrust.org/news-events) for updates, information, and trail building locations.

Work time is typically 9 a.m. to 3:30 p.m.

Locations TBD:

- July 16<sup>th</sup>
- August 20<sup>th</sup>
- September 10<sup>th</sup>

To sign up and for more details email [kevin@tdlandtrust.org](mailto:kevin@tdlandtrust.org).

# STEWARDSHIP UPDATE

The Land Trust takes great pride in managing lands protected by acquisition and conservation easements. Most of the previous owners of acquired Land Trust properties took great care of their land. The Land Trust brings knowledge and field expertise to further improve the properties by working with partners to restore watercourses damaged by legacy uses, thinning forests to restore a more natural population of trees, and developing recreation opportunities that balance the protection of open space with the public's enjoyment of the property.

In 2016, the Land Trust will continue to manage forests on the Royal Gorge and Webber Lake properties. This includes the continued reduction of wildfire fuels on the Royal Gorge property by selectively thinning trees, and the replacement of several damaged culverts through which tributary creeks to Serene Lakes flow underneath access roads. The new culverts will reduce sedimentation and head cuts in the creeks while

providing better access for future forestry. At Webber Lake the Land Trust plans to complete a Timber Management Plan to allow for future forest fuels management and continue to reduce the number of dead and drought-stricken lodgepole pines.

The Land Trust is also pleased to announce that the peregrine falcons are back at Black Wall! These territorial raptors have again chosen to nest at the popular rock climbing site. Staff and volunteers from the local climbing community are monitoring the nest site and temporarily closing climbing routes to protect the nest. See page 30.

The Truckee River Watershed Council (TRWC) plans to continue restoration of Perazzo Meadows on a portion of the meadows owned by the Land Trust. Planning and permitting is underway in Sierra County. In addition, the TRWC will begin restoration of several reaches of Middle Martis Creek on Waddle Ranch Preserve and Elizabethtown Meadows.



# SAVE THE DATE - 2016 EVENTS

## River Ranch Lodge & Restaurant Benefit Dinner

June 23<sup>rd</sup>, 5:30 p.m. - 9:00 p.m.

River Ranch Lodge and Restaurant will donate 30 percent of your total food bill to the Land Trust with its generous Dining for Charity program. The Dining for Charity program is not valid with other discount/promotions. Be sure to tell the reservationist you are dining for the Truckee Donner Land Trust. At Highway 89 and Alpine Meadows Road. Reservations: 530-583-4264.



Riverside dining at lovely River Ranch. Photo courtesy of River Ranch.

## Trails & Vistas Cultural Land Tours\* - NEW! Summer 2016

**Cultural Land Tours** are a new collaboration with Trails & Vistas and the Land Trust for extraordinary adventures combining art, history, and the environment. Throughout the summer, groups will discover Land Trust open space by visiting Waddle Ranch Preserve, Webber Lake/Lacy Meadows/Webber Lake Hotel, and Independence Lake Preserve for a guided tour with the Land Trust's K.V. Van Lom. Each land tour will feature protected open space along with a local painter working on-site to capture the beauty of the land. Paintings will be available to Land Trust members at auction with part of the proceeds going to the Land Trust. To learn more about each cultural tour and for tickets visit: [www.trailsandvistas.org](http://www.trailsandvistas.org).

## Carpenter Valley Docent Hikes Summer 2016

The Land Trust invites you out to see what all the excitement is about with our latest project. Join us for a docent-led hike of Carpenter Valley on the following dates:

June 11 <sup>th</sup>	July 31 <sup>st</sup>
June 26 <sup>th</sup>	August 13 <sup>th</sup>
July 23 <sup>rd</sup>	August 21 <sup>st</sup>

Hikes leave from the Alder Creek Trailhead at 9a.m. Call or write Marcella to sign up and for all the details: [Marcella@tdlandtrust.org](mailto:Marcella@tdlandtrust.org), 530-582-4711, ext. 106. Fifteen people max. Sorry no dogs.

## Trails & Vistas. Art in Nature Hikes. September 10<sup>th</sup>, Spooner Lake Hike, North Canyon Trail

## September 18<sup>th</sup>, Donner Summit Hike, Donner Ski Ranch

Trails & Vistas Art Hikes will be offered at two locations this year, collaborating with over 30 artists to create impermanent environmental art and music installations that re-envision the viewers relationship with nature. Both art hikes feature storytelling, visual and performance art, dance and live music along a three mile Art Hike for people of all ages. For tickets: [www.trailsandvistas.org](http://www.trailsandvistas.org).



Great scenery, surprises, and music await hikers. Photo by Jeff Engerbretson.

## Trails & Vistas World Concert featuring Todo Mundo

## September 10<sup>th</sup>, Sand Harbor, Lake Tahoe

Dig your toes into the sand and listen to the members of Todo Mundo blend a seductive Latin groove concocted from a blend of samba, rumba, Middle Eastern, and reggae styles into inventive performances that have entertained concert goers across the globe since 2009. The San Diego, six member band, Todo Mundo, (All the World) features music styles that will tantalize your spirit while enticing your body to move to the beat. Opening acts include: the soulful blues of Peter Joseph Burt, inspirational sounds of Emily Tessmer, innovative jazz harpist Motoshi Kosako, and performance painting with Suzie Alexander, all performing on one of the most beautiful stages in the world. For tickets: [www.trailsandvistas.org](http://www.trailsandvistas.org) or [www.laketahoeshakespeare.com](http://www.laketahoeshakespeare.com).

# SAVE THE DATE - 2016 EVENTS CONT.

## Truckee's Historic Haunted Tour\* October 13th & 14th

The Historic Haunted Tour is truly one of Truckee's most popular, outlandish, and fascinating events. A cast of old-time characters will guide you on designated stops for a fun and spooky night you will never forget, offering a glimpse into Truckee's rowdy and haunting past. For more information and tickets: [www.truckeehistorytour.org](http://www.truckeehistorytour.org).

\* This is a fundraiser for Trails & Vistas benefiting art in nature programs including school field trips "The Dreaming Tree" for local third grade students, community art hikes, and the Cultural Land Tours which is a new collaborative art and open space program with the Land Trust.



Actors from Truckee's Historical Haunted Tour entertain and educate with spooky, heart-stopping, and downright scary stories from Truckee's rugged past. Photo by Scott Thompson.

Trailbuilding Dates - See page 24.

## Create a Legacy of Open Space & Earn Income

The northern Sierra Nevada is spectacular: meadows with wildflowers, mountain lakes and rivers, amazing wildlife, beautiful forests, soaring peaks and lush meadows. The Land Trust has preserved over 33,000 acres. But our work is not done. Many treasured landscapes still need to be protected and remain threatened.

A planned gift – depending upon your situation – may reduce your current income taxes, reduce or eliminate capital gains taxes, and reduce your gift or estate tax. What is more, a planned gift may be structured to provide current income to you or your loved ones while still benefitting from a current tax deduction.

To make a planned gift or bequest consult with your tax or legal advisor and contact Kathy Englar at 530-582-4711 ext. 104, [kathy@tdlandtrust.org](mailto:kathy@tdlandtrust.org). If you have already planned to leave the Land Trust a legacy gift, please let us know so we can acknowledge your generosity.



# MEET OUR DONORS

## Mary Loomis

It was cross-country skiing and the guaranteed opportunity to shovel huge quantities of beautiful snow that originally attracted us to Donner Summit nearly 40 years ago. Our cabin at Serene Lakes has been the family pivot point ever since. In decades past I did a lot of skiing at Royal Gorge and Castle Peak and biking on summit and Truckee roads, but now I mostly snowshoe and hike. Contributing to the Truckee Donner Land Trust is how I've chosen to help preserve this unique area.

## Bill & Norma Markley

### Why did you join the Land Trust?

Over the years we have watched open spaces be gobbled up by golf courses, housing, vacation resorts, and other urban development. In each case, more and more animal habitat, open spaces, and historical sites are disappearing, leaving less places for people of all economic levels to have access to enjoy these natural places. We found the Land Trust to be about saving these places and allowing access to everyone forever. This aligns exactly with our values.

### What is your background?

Growing up in the foothills of Amador County, Norma's family spent weekends on family fishing and picnic trips. Bill grew up on a dairy in the Central Valley, and his family too, spent many a Sunday taking rides and family picnics in the great outdoors. Our home is in Sacramento.

### How did you end up in Truckee?

After skiing one Saturday in 1974, we went to Donner Lake to visit a friend who had just moved there. We have always loved the Sierras and because of this visit, we got hooked on the area. Our love of hiking, skiing, kayaking, bicycling, geocaching, picnics, and investigating historical and anthropological sites, we learned, was all around us. During 1977, we built a small cabin at Donner Lake, subscribed to the local newspaper, and became more involved with all that the area had to offer. Our children, and now our grandchildren, consider this area an extension of their homes.

### How has the Land Trust's mission to save open space for future generations touched you in a personal way?

As a physical education teacher, Norma (due to grant money) was able to bring a busload of inner city 8<sup>th</sup> grade students for several years to learn to ski and learn about some of the history in the area. Most of her students had never touched snow! In the spring, she would return with Bill in a backup car carrying gear, tents, etc., and the students would hike at the summit, experience historical sites, beautiful views, have lessons in earth science, and get to know about open spaces and the outdoor recreational resources available to them and their families! An added bonus was to watch these kids run to the water at Donner Lake only to realize just how cold melted snow is. There are many kids out there who need organizations like the Land Trust to save our natural places.



Mary enjoying the views atop Mt. Judah.



The Markley's at the Kathy Polucha Kessler Memorial Picnic Area at Donner Summit Canyon overlooking Donner Lake.

Buck for Open Space  
Partners Donate  
a \$1.00 Today

Preserving open space in the greater Truckee Donner region is simply good business. The Land Trust would like to thank the following conservation-minded businesses and their customers and encourage you to give them your business.

The Lodge at Tahoe  
Donner

Paco's Bike and Ski

Sierra Crest Dental,  
Robert Colpitts, DDS

# WEBBER LAKE UPDATE

## Update on the Webber Lake Hotel Restoration

**It's exciting to provide an update on the Webber Lake Hotel Restoration. This historic 1860s hotel, is the only hotel/ stage stop still standing along Henness Pass Road. The Henness Pass Road, which opened in 1849, was so popular a route over the Sierra that freight traveled in the day and stagecoaches at night, once the Comstock Lode was discovered in Virginia City.**

**In 2015, the Land Trust's Board approved funds for a Historic Structures Report, the guiding document for a restoration. The lead architect, Dennis Zirbel, who has done a number of historic restorations in Truckee, completed the report. We have now entered into PHASE II: Preparation, which requires engineering and permitting work.**

**Last summer, photographers documented historic sites throughout the Webber/ Lacey Meadows region with a former Webber Lake caretaker of 26 years who provided artifacts, photos, and great stories. This is helping for set up of eventual exhibits.**

**The Hotel has been well cared-for, thanks to the Webber Lake Ranch managers, and is in what the engineer describes as "in no danger of falling over". In the future, the Land Trust hopes to brace the Hotel to make it structurally sound, and to restore the front lobby and 1-2 sleeping rooms to time period. The lobby will contain exhibits of the hotels' amazing history.**

**If anyone would like to see the hotel, please contact K.V. at the Land Trust: kv@tdlandtrust.org, or call 530-582-4711, ext. 100.**

Weather permitting, Webber Lake will open to the public Memorial Day 2017 for camping and day use.

As a condition of the purchase from the Johnson family who had owned the property for over 100 years, the Land Trust agreed to continue the lease of the private campground for five years. That lease expires at the end of this year. Given the brief, snowless period between the closing of the campground in October and the public opening in the spring, only limited camping use will be offered in 2017. Day use and boat launching will be available.

This summer, the Land Trust will undertake construction of a new campground. A group camp and boat-in only camping are also in the works.

Webber Lake has been an excellent fishing spot for decades. The Land Trust aspires to continue this legacy. As the lake and resort transition from private to public, the California Department of Fish and Wildlife will take over the management of the fishery. The State is currently preparing to stock the lake, likely with Lahontan cutthroat trout, beginning in 2017.



*These are the Docents of the South Yuba River State Park at Bridgeport (the historic covered bridge on the South Yuba). Since 1995, many have taken the Henness Pass field trip each year from Bridgeport to Verdi, stopping at dozens of markers along the way where stage stops once stood. It has always been the highlight of their Docent Training. Last October, they were able to visit the Webber Lake Hotel for the first time, the only remaining hotel and stage stop on the Henness Pass Road to Virginia City. Here is the "over the moon" group! Photo by Chuck Simeca.*



# FOND FAREWELLS AND WARM WELCOMES

The Land Trust's Development Director of 11 years, Kellie Wright, has moved on to pursue new challenges. Kellie started as our Membership Coordinator and worked her way up to Director of Development. Kellie is very appreciated and well known in our community, as well as with our many partners and donors. She led the helm for the difficult job of ensuring our annual fundraising challenges were met to keep our shop open and worked effectively on many large-scale land acquisitions. She was a big part of the Land Trust's many recent successes. As we bid Kellie a fond farewell and best of luck, we welcome her replacement, Kathy Englar as our Director of Philanthropy.



Kellie Wright.

We also said goodbye to beloved Board member, Bill Thauvette. Bill served on the Board for 15 years, bringing his expertise to many Committees and as President. His exemplary service will never be forgotten and will also be memorialized by creating "Bill's Trail", a trail beginning behind his home and connecting to others on the Royal Gorge trail system at Donner Summit.

Finally, we've welcomed Mike Sabarese, Kevin Mitchell, Jim Hoelter, Chrissy Earnhardt, and Brita Tryggvi to our Board and are so pleased to have their many skills at our hand.



Bill Thauvette.

Please learn more about our passionate and talented Board and staff by visiting [www.tdlandandtrust.org/about-us](http://www.tdlandandtrust.org/about-us).

## Thank You to our Partners

Access Fund  
 American Hiking Society  
 Bear Yuba Land Trust  
 Bicyclists of Nevada County  
 Bretthauer Management Inc.  
 California Council of Land Trusts  
 California Department of Fish & Game  
 California Department of Transportation  
 California Natural Resources Agency  
 California State Parks  
 California Trails & Greenway Trust  
 California Wildlife Conservation Board  
 Climbing Resource Advocates for Greater Sacramento  
 Community Foundation of Western Nevada  
 Donner Summit Area Association  
 Donner Summit Historical Society  
 Emigrant Trails Greenway Trust  
 Feather River Land Trust  
 Folsom-Auburn Trail Riders Action Coalition  
 The Gateway Mountain Center  
 Gold Country Trails Council  
 GoodDirtyFun.org  
 The William and Flora Hewlett Foundation  
 Lahontan Community Foundation  
 Land Trust Alliance  
 The Martis Fund  
 Meadow Vista Trails Association

Mellam Family Foundation  
 Mountainside Partners  
 Morgan Family Foundation  
 Mountain Area Preservation  
 National Fish and Wildlife Foundation  
 The Nature Conservancy  
 Nevada County  
 North Fork American River Alliance  
 North Fork Association  
 North Lake Tahoe Chamber of Commerce  
 Northern Sierra Partnership  
 Northstar California  
 Pacific Crest Trail Association  
 The Palisades  
 Patagonia  
 Placer County  
 Placer Land Trust  
 REI, Inc.  
 Resources Law Group  
 Royal Gorge Cross Country Ski Resort  
 Sagehen Creek Field Station  
 Save Van Norden Meadow  
 Ann Taylor Schwing  
 Serene Lakes Property Owners Association  
 Sierra Business Council  
 Sierra Cascade Land Trust Council  
 Sierra Club

Sierra College  
 Sierra County  
 Sierra County Historical Society  
 Sierra Nevada Alliance  
 Sierra Nevada Conservancy  
 Sierra Watch  
 South Yuba River Citizens League  
 Sugar Bowl Ski Resort  
 Tahoe Area Mountain Biking Association  
 Tahoe Donner Association  
 Tahoe Donner Hiking Club  
 Tahoe Institute for Natural Science  
 Tahoe Rim Trail Association  
 Tahoe Trampers  
 Tahoe Truckee Community Foundation  
 Town of Truckee  
 Trails & Vistas  
 Trout Unlimited  
 Truckee Chamber of Commerce  
 Truckee-Donner Historical Society  
 Truckee River Watershed Council  
 Truckee Tahoe Airport District  
 Truckee Trails Foundation  
 The Trust for Public Land  
 United States Forest Service  
 Vail Resorts EpicPromise

# SEASONAL CLIMBING CLOSURE IN EFFECT ON DONNER SUMMIT

To protect nesting peregrine falcons, certain climbing routes on Donner Summit's Black Wall are closed until mid-summer. Each year, volunteers with the Truckee Donner Land Trust and Access Fund monitor Donner Summit climbing areas for nesting raptors. A peregrine falcon nest with chicks has been located at the recently conserved Black Wall climbing area.

Raptors are well known to nest in the area, and this year's nest at Black Wall is in the grotto at the base of Rambo Crack in Cannibal Gully. The Land Trust, Access Fund and the Save Donner Climbing group are asking climbers and hikers to please respect a seasonal closure.

Volunteers will monitor the nest and lift the closure when nesting activities have ceased for the year. The nest has two eggs, and the female was incubating, thus they may fledge by mid-July. The female appeared more high-strung than birds in recent years, and is possibly a new individual, so we are asking climbers and hikers to stay out of that gully or line of sight. While hiking or climbing outside this closure buffer nearby, please avoid disturbance, keep noise to a minimum, and use best judgment to gauge and mitigate your impact.

## The following routes are closed until further notice:

Touch and Go, Hungover Hangover, Rat's Tooth, Empty Sky, Rhythm Killer, Pinball Junkie, Inner Recess, Rambo Crack, Space Invaders, and Bourbon Street.



Closure signs are strategically placed at the approach.

Fortunately, climbers can choose from plenty of other routes at Black Wall and elsewhere on Donner Summit. The 10-acre property features some of the most dramatic terrain in the Truckee-Tahoe region, with stunning vistas and world-class climbing on finely textured granite. The climbing routes were established more than 50 years ago and range from deep chimneys and low-angle slabs for beginners, to overhanging test pieces for experts, and splitter cracks and sport routes for all skill levels.

The Land Trust and the Access Fund raised over \$300,000 toward the acquisition, stewardship, and additional trailhead improvements on the 10-acre property and adjacent Land Trust land late last year, protecting the climbing region in perpetuity.

**Learn more about the Access Fund at [www.access-fund.org](http://www.access-fund.org).**

# TAHOE DONNER MOVES TO PURCHASE CRABTREE CANYON

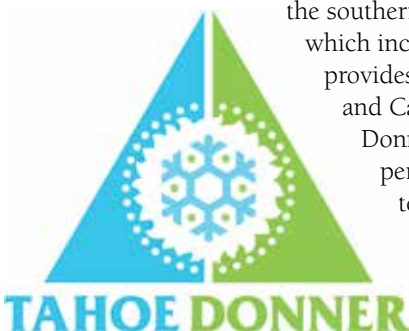
Tahoe Donner Association has finalized an agreement with the Land Trust to move forward with the acquisition of a 640-acre parcel of land located in Carpenter Valley and adjacent to Tahoe Donner's existing 7,000-plus acres.

Tahoe Donner will own and manage the southern-most portion of the property, which includes Crabtree Canyon and provides a gateway between Euer Valley and Carpenter Valley. The Truckee Donner Land Trust will hold a permanent conservation easement to protect the property from development. The Land Trust is in contract to buy and protect an additional 600

acres of Carpenter Valley next year. This spectacular valley, which has remained in private hands since the mid-19th century, offers stunning views, rich habitat, and tremendous recreation opportunities.

"This is a critical open space that is of great value to our community, and we are pleased to work with Tahoe Donner Association to help protect it", says Perry Norris, the Land Trust's Executive Director.

"Tahoe Donner's vision as a desirable mountain community includes providing attractive and well-maintained facilities and amenities while maintaining accessible and healthy natural surroundings," says Steve Miller, President of the Board of Tahoe Donner Association. "The acquisition of Crabtree Canyon parcel will also protect Tahoe Donner's borders from future development."



# TAKE CARE CAMPAIGN

Litter. Dog poop. Cigarette butts. Unsafe fires. Bear safety. Aquatic invasive species. These are some of the issues impacting the Truckee Tahoe region. The Lake Tahoe Outreach Committee unveiled the Take Care™ campaign in 2015 to help reduce these impacts and promote a more responsible use of our great outdoors.

The campaign was designed for use in outreach efforts by public agencies, private businesses, and nonprofit organizations like the Land Trust. Aimed at residents and visitors, the campaign is a series of reminders that poke fun at the mistakes we all make when we're not paying attention.

This year, the Land Trust ordered Take Care signage to place at popular trails to remind people to not litter and to pack it out, including pet waste. Staff needs the help of people visiting Land Trust properties to maintain resource values and the visitation experiences of others.

Take Care was developed by the Lake Tahoe Outreach Committee, which is comprised of the League to Save Lake Tahoe, Tahoe Fund, Tahoe Regional Planning Agency, UC Davis Tahoe Environmental Research Center, Tahoe Resource Conservation District, and Tahoe Sustainability Collaborative. For more information, visit [www.takecaretahoe.org](http://www.takecaretahoe.org).

Funding for Take Care was provided by Tahoe Fund, Martis Fund, Tahoe Regional Planning Agency, and Barton Health. The campaign was developed by the creative team of Meg Siegal and Nate Laver.



Thank You to our Business Partners

Business Partners contribute a cash donation each year, providing the Land Trust with the reliable annual funding we need to pursue large-scale projects.

Access Fund  
 Adventure Maps, Inc  
 Adventures Cross-Country  
 American Alpine Club  
 Cabonas  
 Chase International  
 Conservation Alliance  
 Dennis E. Zirbel, Architect  
 Donner Lake Property Owners Assoc  
 Donner Lake Woods Homeowners  
 Association  
 Echenique Construction  
 Floyd Construction, Inc.  
 Gabbart & Woods Structural Engineers  
 GS Improvion  
 Hartley Appraisal Services  
 High Country Construction  
 Integrated Environmental Restoration Services, Inc.  
 Law Offices of Michael A. Graham, LLC  
 Law Offices of Thomas S. Archer, LLC  
 Marindependent Insurance Services, LLC  
 MWA Architecture and Engineering  
 Northern Sierra Partnership  
 Paco's Truckee Bike & Ski  
 Plumas Bank  
 REI  
 River Ranch Lodge  
 Ryan Group Architects  
 Serene Lakes Property Owners Association  
 Sierra Mountain Mortgage  
 Silver Sage Center  
 SnowTech  
 Sorensen's Resort  
 Sugar Bowl Ski Resort  
 Summit Drywall  
 Tahoe Oral Surgery and Implant Center  
 Tahoe Truckee Sierra Disposal Co.  
 The Sohagi Law Group, PLC  
 Tiner Properties, Inc.  
 Truckee Overhead Door  
 Truckee River Associates - Thomas Watson  
 Ursack  
 Vail Resorts

The Truckee Donner Land Trust was founded in 1990 to preserve and protect scenic, historic, and recreational lands with high natural resource values in the greater Truckee Donner region, and manages recreational activities on these lands in a sustainable manner.

Tel. 530-582-4711  
Fax 530-582-5528  
info@tdlandtrust.org  
www.tdlandtrust.org

The Truckee Donner Land Trust is a 501 (c)(3) nonprofit organization. All donations to the Land Trust may be tax-deductible under the IRS Code.

#### BOARD OF DIRECTORS

Jeff Brown, *President*  
Ted Owens, *Secretary*  
Geoffrey Griffin, *Treasurer*  
Gina Biondi  
Anne Chadwick  
Chrissy Earnhardt  
Jim Hoelter  
Kevin Mitchell  
Michael Sabarese  
Brita Tryggvi  
J. Thomas Van Berkem

#### ADVISORS

Martin Bern  
John Cobourn  
Lance Conn  
Kathleen Eagan  
Bob Fink  
Penny Fink  
Ralph Hunt  
Judy Mayorga  
William McGlashan  
Stefanie Olivieri  
Jim Porter  
Craig Ritchey  
William Thauvette

#### STAFF

Perry Norris, *Executive Director*  
Ward W. Fransler, *CFO, CPA*  
Kathy Englar, *Director of Philanthropy*  
John Svahn, *Stewardship Director*  
K.V. Van Lom, *Communications and Administration Director*  
Kevin Starr, *Stewardship Coordinator*  
Marcella Barbano, *Membership Coordinator*  
Dave Mandrella, *Independence Lake Preserve Marina Manager*



P.O. Box 8816  
Truckee, CA 96162

CHANGE SERVICE REQUESTED

Non-Profit Org.  
US Postage  
PAID  
Permit #1  
Kings Beach, CA



Make a secure donation online or set up a recurring donation from our website: [www.tdlandtrust.org](http://www.tdlandtrust.org)



Castle Peak 100k is a 100-km (62-mile) foot race on the mountain trails of Truckee, traversing Prosser Hill, Euer Valley, the Donner Lake Rim Trail, Castle Peak, and Royal Gorge before descending Cold Stream Canyon to the finish at Donner Memorial State Park. Photo by Scott Rokis Photography.



This newsletter is printed on recycled paper using soy ink.

