

TRUCKEE DONNER LAND TRUST

*Preserving and protecting
important historic, recreational
and scenic open spaces in the
greater Truckee region.*



Fall Newsletter
Volume 34
November, 2008

The Campaign
for Truckee
Open Space
see page 4

A Message from the Executive Director

Dear Friends,

The non-profit sector is watching our economy's wild ride as diligently as the for-profit sector. The loss of trillions of dollars in the stock market is certain to negatively impact philanthropy. Not surprisingly, during the last 40 years, charitable giving fell when there have been significant downturns in the financial markets.

Interestingly, the biggest annual drop in charitable giving was not tethered to the economy at all. When President Richard Nixon resigned, giving fell 5.6%. Even more than the economy, a decline in giving is closely associated with national traumatic events.

After 9/11, many non-profits suffered substantial declines in their all-important year-end giving. The Truckee Donner Land Trust weathered that storm pretty well. We'll see how we do in the recession of 2008.

There are two points I would like to make.

First

Our work cannot wait. We see a closing window of opportunity to truly influence what our region's landscape will look like to our children. Land will be developed in the future, and if it isn't developed it will be, as we have seen in other mountain communities, prohibitively expensive to acquire in fee.

Second

The Truckee Donner Land Trust provides an excellent return on your charitable investment. The Land Trust is



The Land Trust currently has 1,300 acres under option between Independence Lake and Perazzo Meadows.



The Land Trust is aggressively working to protect Summit Canyon, Donner Lake's largest tributary.

one of the most nimble, collaborative and efficient conservation organizations in the Sierra, if not in all of California. We have right now \$23 million in transactions under contract to protect some truly iconic places such as Perazzo Meadows.

This is a pivotal time for conservation in the greater Truckee Donner region. The Board and staff of the Land Trust are deeply grateful for your concern to protect open space and for your support.

Warm regards,

***Perry Norris
Executive Director***

DONNER LAKE RIM TRAIL

Edges Closer to Completion

It was another fun and productive year on the Donner Lake Rim Trail. We made great progress on a new section of trail between Drifter Hut and Glacier Way in Tahoe Donner. We were also successful in recruiting a record number of volunteers and maintaining our perfect safety record.

The thin winter snowpack created very dry soils and extremely hazardous conditions for wildfire. These dry conditions prevented using gas-powered tools and required clearing miles of brush by hand. Still the volunteer groups, some numbering more than fifty people, did an excellent job of clearing the thick brush and building the trail.

The new trail currently offers a nice 'out-and-back' of one mile each way, with beautiful views of Negro Canyon. The new trail can be accessed from the Glacier Way Trailhead in Tahoe Donner. Proceed on foot about a mile on the Tahoe Donner Trail to the Negro Canyon Overlook. The new trail begins here, climbing gently to the north. The chance to view raptors is among the best in the area. Several crews working on the trail observed fresh bobcat tracks in the morning. The trail also makes for a great evening stroll with panoramic views of Tinker Knob, Mt. Lola and Carpenter Ridge. When completed the new trail will provide a moderately pitched single-track alternative to

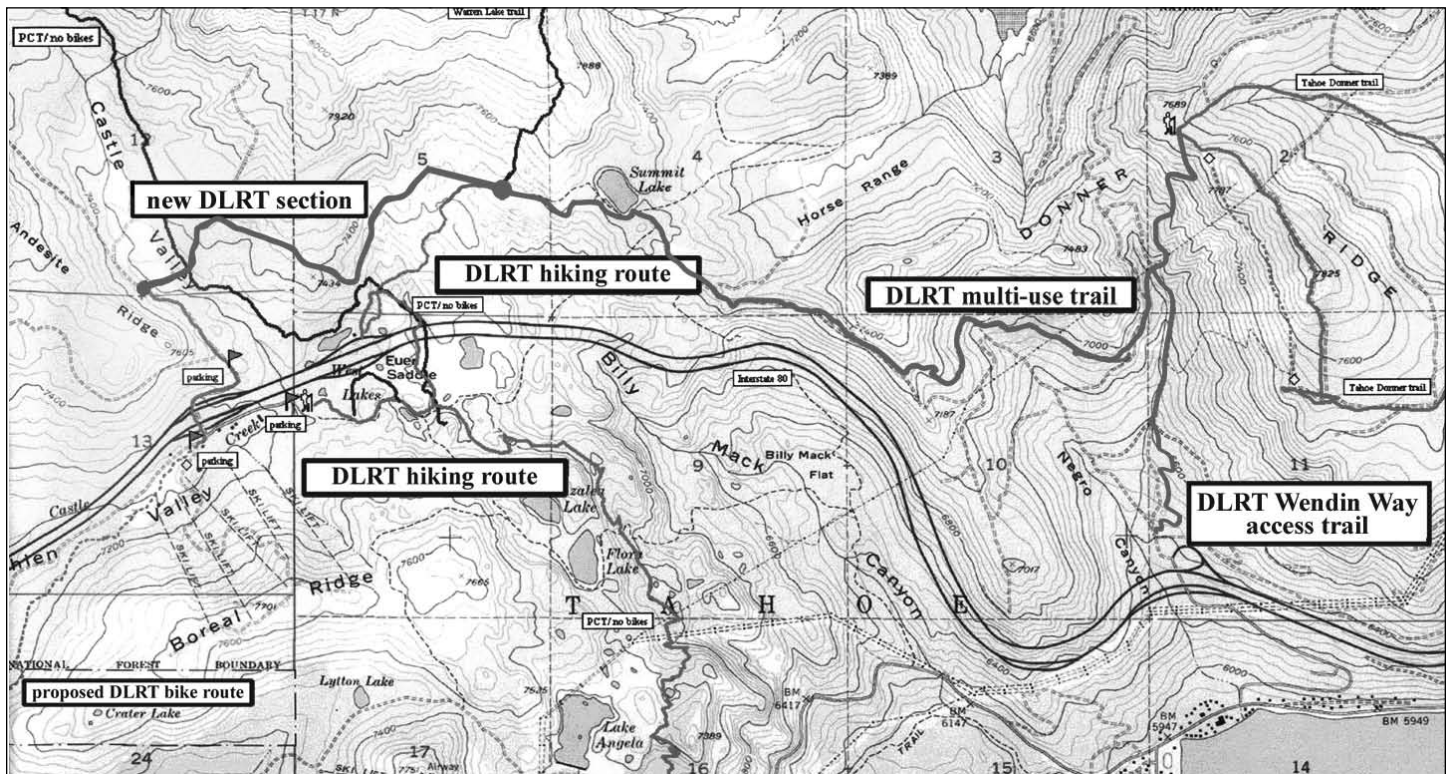


Vicki Stanley – three-time American Hiking Society volunteer on the Donner Lake Rim Trail between Drifter Hut and the Glacier Way Trailhead in Tahoe Donner.

the steep section of dirt fire road currently used to hike or bike between Drifter Hut and Glacier Way.

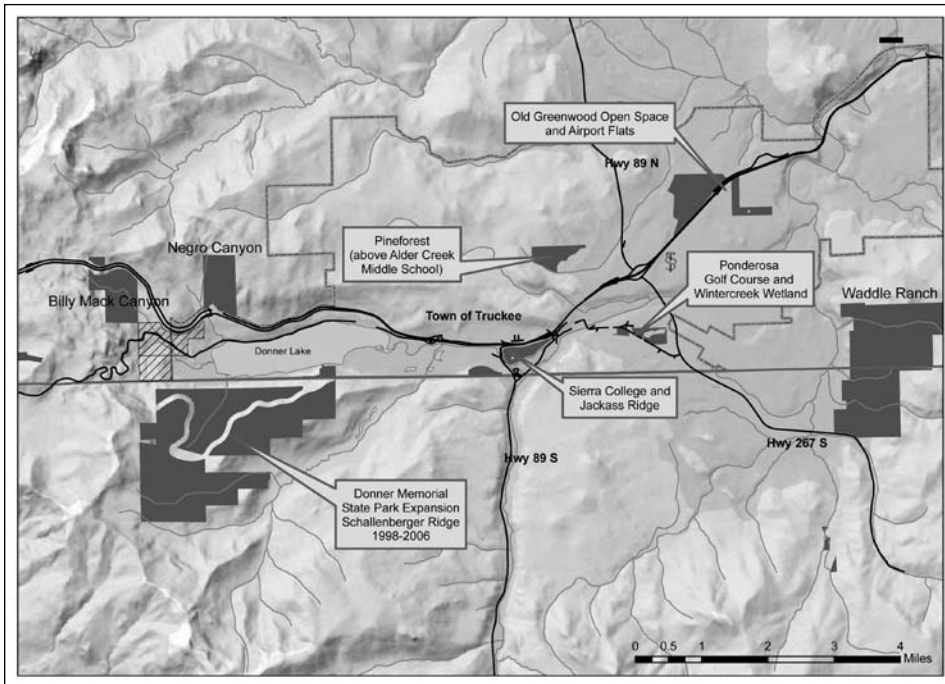
Elsewhere on the Rim Trail, volunteers and Land Trust staff installed a second kiosk at the new Wendin Way Trailhead at the entrance to Negro Canyon and performed routine maintenance on the entire trail.

Thanks to all of our volunteers and supporters for another great season out on the trail!



Map created by DDLT staff.

THE CAMPAIGN FOR



80. The acreage is part of an important migratory corridor for the Loyalton/Truckee deer herd.

McIver Hill

Also locally known as Hippie Hill, a 500-unit condominium development was once proposed on this 79-acre greenbelt adjacent to Truckee's historic downtown. The Land Trust purchased a conservation easement on the property that protects its scenic qualities, allows for public trails as well as a new campus for Sierra College.

Stretching from Hirschdale to the east and almost to Donner Summit to the west, the Town of Truckee encompasses nearly 34 square miles. Protecting natural lands and open spaces within and surrounding the Town is critical to protecting Truckee's character and mountain charm.

The Truckee Donner Land Trust launched its Truckee Open

Space Campaign in 2005. Since then we have protected over 1,100 acres in, or very near, the Town of Truckee. We're proud to note that creative partnerships and out-of-the-box thinking accomplished many of these projects.



McIver Hill, home to the proud, new campus of Sierra College.

Airport Flats

As one approaches Truckee from the east, Airport Flats is the gateway to our community and the Sierra. The Land Trust acquired 71-acres at Airport Flats by working with the Town and East West Partners to transfer development rights from Airport Flats onto the existing Old Greenwood subdivision. The Land Trust owns an additional 260 acres immediately north of Airport Flats and across Interstate



Airport Flats, the gateway to Truckee and the Sierra.

Ponderosa Golf Course

Through a remarkable partnership between the Town of Truckee, the Truckee Tahoe Airport District, the Truckee Donner Parks and Recreation Department, the Truckee Trails Foundation and the Land Trust, this community-built golf course and green belt remains open and has been saved from residential development. The project also

TRUCKEE OPEN SPACE



Ponderosa Golf Course

provides the community with a critical trail connection between downtown and the Martis Valley.

Negro Canyon

Once planned for a subdivision by the name of Donner Heights, Negro Canyon is one of Truckee's most popular areas for hiking and biking, and provides access to the Donner Lake Rim Trail. In partnership with the Truckee River Watershed Council, restoration efforts of Gregory Creek, a major tributary to Donner Lake, are underway. The Land Trust acquired 240 acres in the Canyon in 2006 and hopes to acquire another 400



Negro Canyon

acres in the future, forever protecting this recreational and natural resource at Truckee's doorstep.

Winter Creek Wetland

The Land Trust acquired this 15-acre scenic wetland across from the Regional Park in 2005. Snowy Egrets and coyotes are often spotted on the property.

Jackass Ridge

Stefanie Olivieri donated a conservation easement to the Land Trust, forever preserving this scenic and conspicuous Truckee landmark. Combined with Schallenberger Ridge and McIver Hill, the scenic viewshed from downtown Truckee to the crest of the Sierra is now protected.



Winter Creek Wetland

Billy Mack Canyon

The Land Trust has purchased 240 acres in this rugged Canyon and is working to acquire another 500 acres on both sides of Old Highway 40. All of this acreage will eventually be included in Donner Memorial State Park. The new trails connecting to the Pacific Crest Trail and the Donner Lake Rim Trail will be a wonderful amenity. The acquisitions also protect more than three miles of riparian corridor along Frog and Summit Creeks.

Donner Lake Rim Trail

What's open space without a trail? Look for a new section of the Donner Lake Rim Trail across Schallenberger Ridge, acquired by the Land Trust in 2002. State Parks is planning to start construction next summer.



Billy Mack Canyon

WADDLE RANCH ACCESS

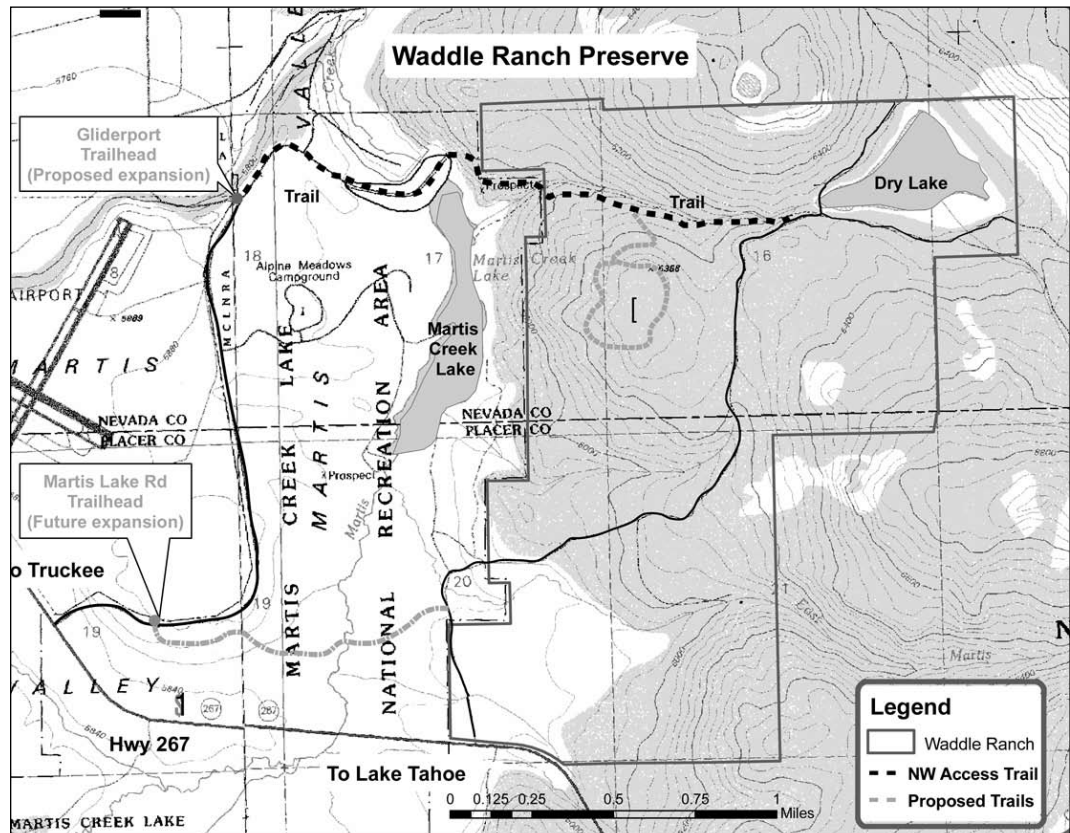
In partnership with our neighbors, the U.S. Army Corps of Engineers, the Truckee Donner Land Trust has been working to ready Waddle Ranch Preserve for heavy public use. Projects include enlarging the trailhead at the corner of Martis Dam Rd and Gliderport Way, installing temporary directional signage on Waddle Ranch (soon to be replaced by permanent, much better looking signage), designing maps for the informational kiosks, beginning preliminary work on a new loop trail in the Preserve, and designing a new access trail to the southwest side of the property.

The two new trails, currently in the design and permitting stage, will open new parts of Waddle Ranch to hikers and mountain bikers. Leaving Martis Dam Road at the first gate in from SR 267, Southwest Access Trail, as we're calling it, will cross Martis Valley, and connect with Old Mill Road at the bridge over East Martis Creek.

The second trail, called Beacon Loop, will be nearly two-miles circumnavigating the hill



The Land Trust is expanding the popular Gliderport Trailhead to accommodate up to 15 vehicles.



Map created by TDLT staff.

Please access Waddle Ranch Preserve via Martis Creek Lake Reservoir. Drive to end of Martis Lake Rd. to our recently expanded trailhead and follow signs from there over the dam, and onto Waddle Ranch. The Land Trust discourages access to Waddle Ranch from SR 267 due high-speed traffic that makes it dangerous to turn in or out.

WADDLE RANCH CONT.

on which the airport beacon is located. It will pass interesting rock formations, a sugar pine grove, and offer grand views of the Martis Valley, Truckee, Castle Peak and other surrounding mountains.

In trying to find a sign design befitting of Waddle Ranch Preserve, the Land Trust staff approached Mountain Forge, a local family-owned blacksmith shop in Truckee. In partnership, we created a design similar to trail signs used in Yosemite National Park. The signs will be constructed of metal and will have cut-out lettering. They will be allowed to rust over



Geologists at Waddle Ranch searching for seismic clues to assess the safety of the Martis Reservoir dam. The Martis Valley is crisscrossed by relatively new and active faults.

time, offering a rustic, unobtrusive look and feel.

Construction on all of the above projects will begin in the spring of 2009.



Tracks of snow hares on Waddle Ranch.

.....

Many thanks to our friends at Mountain Forge for partnering with us to create timeless and long lasting signage for Waddle Ranch.

About the trenching at Waddle Ranch Preserve

If you drove through the Martis Valley in October, you might have noticed heavy machinery on Waddle Ranch Preserve. The Army Corps of Engineers was performing seismic and geologic research to determine the safety of the Martis Dam adjacent to Waddle Ranch. The research entailed digging large trenches to expose possible faults.

The Land Trust worked for months with the Corps and their contractors to insure that the watershed, wildlife habitat and the public's enjoyment of the property are only minimally disturbed. While the work is imperative for public safety and temporary, the Land Trust's Board and staff did not miss the irony of allowing heavy machinery onto Waddle Ranch, something that we spent nearly three years trying to prevent.

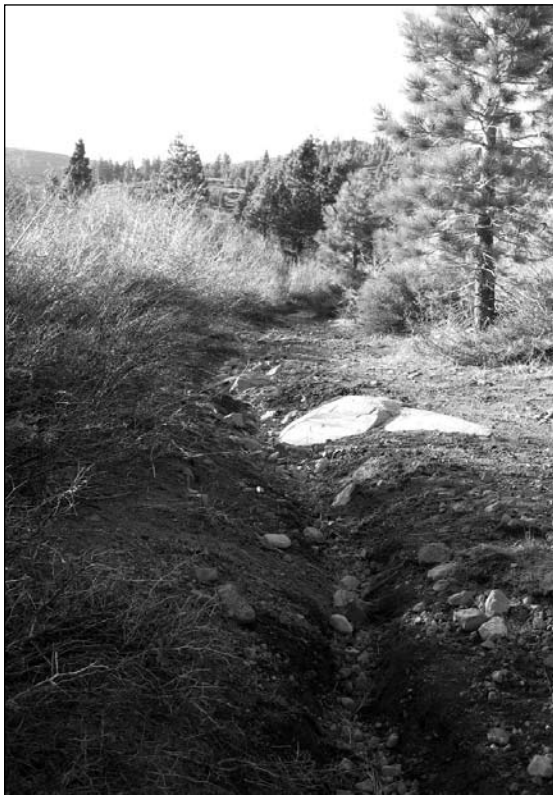
The geologists did report daily sightings of hawks and harriers hunting over the Valley floor, and a morning welcome by coyotes.

CARING FOR THE LAND WE'VE PROTECTED

An inherent aspect of the Land Trust's mission is to protect soil and water resources through proper land stewardship and management. Recent and ongoing efforts in Negro Canyon illustrate how the Land Trust pursues this aspect of our mission.

Land Trust staff worked closely with the U.S. Forest Service in identifying problems, including badly needed repairs and maintenance, on the public access road passing through the heart of Negro Canyon. The poor state of the road had contributed to erosion and other water quality problems during significant rains and heavy spring run-off. The Forest Service completed the needed repairs and maintenance earlier this year.

The Land Trust builds trail according to current standards for sustainable trail construction. These standards include design criteria and construction techniques that avoid erosion and degrading water quality. Using these criteria and techniques, the Land Trust last summer built a new trail, eliminating the very problematic informal trail on the bank of the eastern branch of Gregory Creek. This summer the second and final phase of restoration of the old problematic trail-bed was completed.



Erosion on the old informal trail.



Students from Truckee High School put in a hard day's work in Negro Canyon on Truckee River Day. This spirited group had fun redirecting runoff from a storm event back to its natural course and into Gregory Creek.

The Land Trust will work closely with the Truckee River Watershed Council as it completes its assessment of the entire Negro Canyon watershed. The assessment will serve to inform future efforts by the Land Trust, in cooperation with the US Forest Service and other property owners, to enhance soil conservation and water quality in Negro Canyon.

ANOTHER 1,400 ACRES NOW PROTECTED

In December, the Truckee Donner Land Trust and Trust for Public Land will complete the acquisition of two remarkable properties in the Sierra Nevada Checkerboard. Included in the \$4.65 million transaction are 990 acres that include most of Perazzo Meadows and 440 acres immediately west of Paradise Valley and north of Basin Peak. Public lands surround both properties.

Perazzo Meadows includes nearly 2.5 miles of the Little Truckee River and extensive meadow habitat. The Land Trust's Lands and Conservation Director, Sara Jones, summed it up aptly. "It is off the charts in terms of its resource values, not to mention it's pretty as a post card."

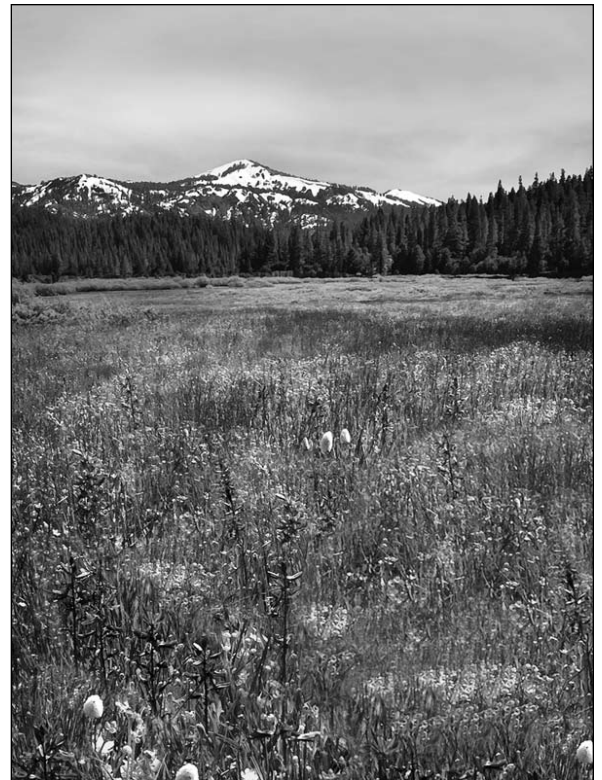
The property is also of enormous strategic importance in limiting future development within the Sierra Nevada Checkerboard. Over the past ten years, the pace of residential development in the Upper Little Truckee River watershed has quickened. If enough development occurs to trigger plowing the Jackson Meadows Road, the floodgates, the Land Trust fears, will be opened for further development in the Checkerboard in unincorporated Nevada and Sierra Counties.

The Checkerboard is the land ownership pattern of alternating sections of public and private land and dates back to nineteenth century when the Federal Government granted every other square mile to Railroad's "Big Four."

Next summer, the Land Trust will construct a trailhead and a new trail for public access to the Little Truckee River.

The Land Trust's partners, the Truckee River Watershed Council and the United States Forest Service, will also be commencing an extensive restoration effort in the Little Truckee River to improve water quality and aquatic habitat.

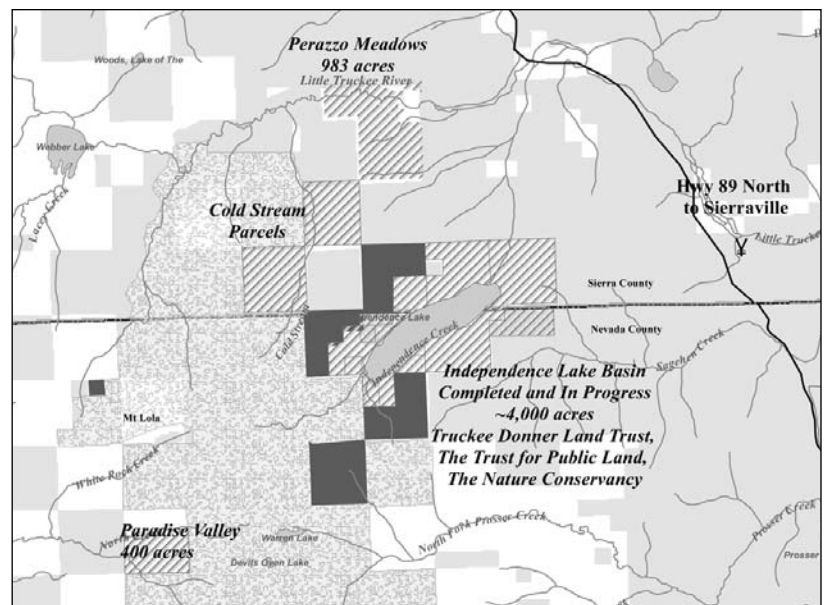
The Paradise Valley property will be conveyed to the United States Forest Service at the close of escrow for inclusion in the proposed Castle Peak Wilderness Area. The Pacific Crest Trail traverses its eastern boundary.



Perazzo Meadows. "It is off the charts in terms of its resource values, not to mention it is pretty as a postcard." Photo courtesy of Elizabeth Carmel - www.thecarmelgallery.com.



Sara T. Jones, the Land Trust's Land and Conservation Director, holds a big check with California Secretary for Resources, Mike Chrisman. The Resources Agency's River Parkway Program contributed \$1 million toward the \$4 million acquisition of Perazzo Meadows.



Map created by TDLT staff.

The Paradise Valley acquisition will be included in the Castle Peak Wilderness Area. Perazzo Meadows, in addition to its important natural resources, will provide a buffer to wild and roadless lands.

SEASONS OF MARTIS

Many thanks to our Local Art Community

The 2nd annual Seasons of Martis was a great success. More than 32 nationally known artists gathered to paint throughout the beautiful Martis Valley. On October 4th a standing room only crowd listened to a lecture by Jean Stern, author, art historian and director of the Irvine Museum. The paintings, created during the

four-day event, were sold with part of the proceeds donated to the Truckee Donner Land Trust.

The Land Trust would like to thank all those who participated in the event: North Tahoe Arts, Savior Fare, East West Partners and the Tahoe Resorts Foundation. And many thanks to Lois and Andy Skaff.

We also extend our thanks to each of the 32 artists who braved the cold to explore and interpret the Martis Valley, including the 1,482-



Plein air painting is painting in a landscape quickly in order to catch the light and sense of location.

acre Waddle Ranch Preserve, the heart of the Martis Valley.

The Land Trust would like to thank the following businesses for their In-Kind donations.

- Auburn Printers
- Capital Beverage Co.
- Carmel Gallery Downtown Truckee
 - Elizabeth & Olof Carmel
- Anne Chadwick Photography
- Clair Tappaan Lodge
- Bob & Penny Fink
- Geocadd Aerial Surveys
- Crystal Harling
- Hartley Appraisal Services
- Integrated Environmental Restoration Services
- Florian’s Fine Wines & Specialty Foods
- The Mountain Forge, Inc.
- Mountain Hardware & Sports
- Northstar-at-Tahoe
- Patagonia
- The Pour House
- Puma Springs Vineyards
- Quality Enterprises REI, Inc.
- Anne Taylor Schwing
- Squaw Valley USA
- Sugar Bowl
- Sugar Bowl Academy
- Teichert Foundation
- Town & Country Storage
- Town of Truckee
- United States Army Corps of Engineers
 - Doug Grothe & Jacqui Zink
 - Scott Wall Forestry

WAYS TO GIVE:

Donner Lake Rim Trail, Adopt-A-Quarter-Mile – Consider a \$1,000 contribution to adopt a quarter mile along the Rim Trail. This is great way to memorialize your family’s enjoyment of trails. Adopters are recognized at a nearby trailhead.

Donner Lake Rim Trail, Adopt-a-Bridge – Consider a \$10,000 contribution to adopt a bridge along the Rim Trail. Adopters receive a permanent plaque at the bridge unveiled at a dedication ceremony.

Memorial Gifts & Honorary Memberships – Honor the memory of a friend or loved one who treasured the open spaces and wild lands of our area. Or give a gift membership for birthdays, holidays, weddings or other special occasions.

Monthly Giving – Many people find it easier to make a smaller contribution each month, thereby increasing their total support without financial difficulty. By providing reliable funding and helping with our planning, monthly givers help us protect more land. We can charge your credit card in an amount you specify each month.

Gifts of Stock – Gifts of long-term appreciated stock and mutual fund shares are an easy way to make a lasting contribution. Benefits may include: Income tax saving, capital gains tax savings, and provide crucial support to the Land Trust.

Planned Giving – Leave a legacy and help us protect open spaces for future generations by including the Land Trust in your estate planning. Estate gifts may reduce your income taxes, reduce or eliminate capital gains taxes, reduce your gift or estate tax, provide income to you and your loved ones, as well as help support our efforts to protect our area’s most important treasures.

In-Kind Gifts – Donations of goods or services may also be tax-deductible.

Volunteer – We are looking for volunteers to assist at events and build trail on the Rim Trail and at Waddle Ranch. Or if you have a special skill, please let us know!

IN MEMORY OF SUZY HIMELSTEIN

Suzy Himelstein, daughter of Mark and Nancy Himelstein, long-time supporters of the Truckee Donner Land Trust, passed away in April at age 25. Suzy was born in San Francisco, yet spent a great amount of time roaming the great outdoors of Serene Lakes and Donner Summit where her family has owned a cabin for 28 years.

After graduating from Berkeley High School in 2000 where she was co-editor of the senior yearbook and the most-valuable defensive player on the field hockey team, she attended the University of Oregon.

Suzy participated in two Outward Bound courses, backpacking in the West and

canoeing in the wilds of Canada. She loved experiencing and celebrating the beauty of the great outdoors. She also was a passionate snowboarder.

Suzy's family and friends will remember her for her warmth, loving nature, genuine heart, integrity, and for her love for Tahoe and the High Sierra. She will also be remembered for her courage, tenacity and spirit as she battled a disabling illness.

We are honored that Suzy's family has established a memorial fund in her name to benefit the Truckee Donner Land Trust.



Suzy Himelstein

◀ — — — — — ▶

Are you looking for the perfect gift for someone who seems to have everything?

Give the gift of open space for any occasion.

An honorary gift is a thoughtful way to show your friends and family how much you care about them and the environment.

Gift Memberships and Special Acknowledgements are available for all occasions. For more information call the Truckee Donner Land Trust at 530-582-4711.

◀ — — — — — ▶

STATE PARK TO GROOM TRAILS FOR SKIING AND SNOWSHOEING

Staff at Donner Memorial State Park announced that they will once

again be grooming trails for winter recreation. These groomed trails will offer Nordic skiers and snowshoers a smoother, safer, and easier-to-follow route into the backcountry including lands conveyed by the Truckee Donner Land Trust to the Park. The groomed route will travel near the lakeshore to China Cove, and through the campground, before heading into a long loop around Coldstream Valley. Please note that dogs will not be allowed on the groomed trails in an effort to keep the tracks smooth and protect water



Donner Memorial State Park is perfect for kids learning to Nordic ski. Photo courtesy of Elizabeth Carmel - www.thecarmelgallery.com.

quality in Donner Lake. (Feces from pooches have become a real problem at the lake.) Snowshoers are asked to travel outside the ski lanes. For more information, contact the State Park, 582-7892.

*The Land Trust would like
to thank the following
Business Partners.*

American Hiking Society
Arbor Home Mortgage, Inc.
Best Western Truckee Tahoe Inn
Cabona's
Castle Peak Snow Removal &
Vacation Rentals
Cedar House Sport Hotel
Chase International – Jeff Hamilton
Robert Colpitts, DDS
Cottonwood Restaurant
DMB/Highlands Group, LLC
Donner Lake Property Owners Association
Donner Memorial State Park
Donner Truckee Veterinary Hospital
Dragonfly
The Estates Group – Tom Pillsbury
Geocadd Aerial Surveys
Heat-Tech of Truckee
Home Concepts
Isabella O.
Jackass Ridge
Kelly Brothers Painting, Inc.
Law Office of Porter • Simon
Los Gatos Construction Co., Inc.
Lost Trail Lodge
Martis Valley Associates –
Anne Dain Goeschl
Maui Vacation Rentals
North Tahoe Arts
Offroute.com
Pacific Crest and Bar of America
Pianeta Ristorante
Plumas Bank – Robert Mann
Plumas Bank – Shelly Wright
Ryan Group Architects
Sierra Club
Sierra Mountain Mortgage
Silver Sage Center for Family Medicine
The Sohagi Law Group, LLC
SnowTech
State Farm Insurance – Tahoe City
Streamline Consulting Group
Tahoe Sierra Eye & Optical
Mark Tanner Construction, Inc.
TIP Printing & Graphics, Inc.
Tony Hardy Construction, Inc.
Truckee River Associates
Truckee-Tahoe Lumber
Dennis E. Zirbel, Architect

BUSINESS PARTNER PROFILE

The Cedar House Sport Hotel

The Cedar House Sport Hotel is the dream work of Jeff and Patty Baird. The hotel is a reflection of the Baird's experience visiting small family-run hotels in the European Alps. The Baird's philosophy is "a guest is a guest in one's home, not a customer." The goal is to create a place to return to, a place which creates a feeling of connection."

It's important to the Bairds to create a place where one not only connects to each other, but also reestablishes a bond back to the natural world. Using sustainable building principles, The Cedar House respects the environment and shows guests that comfort and luxury are not sacrificed when one chooses to go "green". The Bairds hope that "when one connects to the natural world – whether it is through mountain



*Jeff and Patty Baird with their dog
Baxter.*

recreation, or just simply being outside – the desire to protect our surroundings will grow".

The Bairds recently completed their new expansion – an event center featuring state of the art meeting facilities as well as a private dining room. They will host culinary events as well as cooking classes.

*For more information about
The Cedar House Sport Hotel visit
www.cedarhousesporthotel.com
or call 530.582.5655. They are
located just east of downtown
Truckee on Brockway Road.*



Summit Canyon and Donner Lake

*Business and Buck for Open Space Partners provide us
with the reliable funding that we need to pursue large-scale
projects, like the one pictured above.*

*To find out more about becoming a Business Partner or a
Buck for Open Space Partner, please contact Kellie Wright
at 530-582-4711 or kellie@tdlandtrust.org.*

5TH ANNUAL TRAILS & VISTAS

*“Songs of the Earth”
September 6-7, 2008*

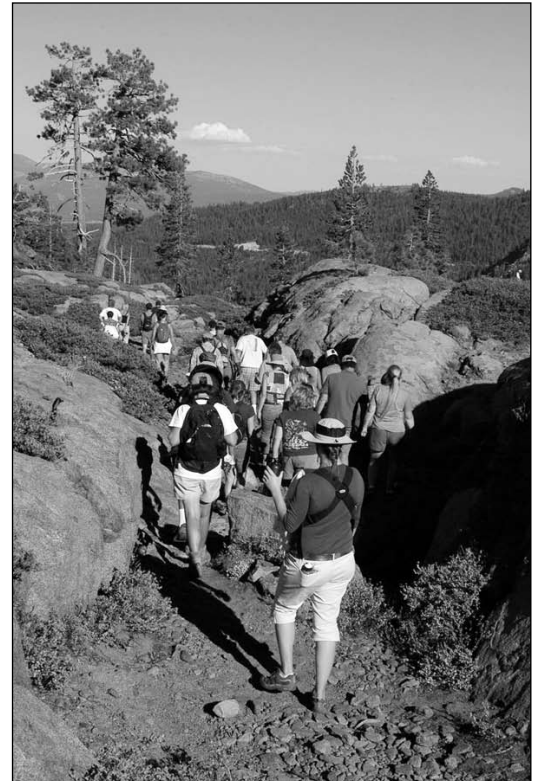
For the second year in a row Trails and Vistas performed to a sold-out show. Over 30 artists and performers provided a unique wilderness experience through dance, music, and installation art on a guided hike. We are delighted that over 700 participants, including many children, enjoyed this inspiring event held along Pacific Crest Trail on Donner Summit.

Trails and Vistas is a unique collaboration between the Truckee Donner Land Trust, InnerRhythms Dance Theater and Arts for the Schools. The three organizations work closely with Founder and Artistic Director Nancy Tieken Lopez, and Co-Director/Choreographer, Elizabeth Archer, to strengthen ties between art and the environment.

Please join us for next year’s event on September 12 & 13, 2009. For more information visit www.trailsandvistas.com.



Lasso performer Kansas Carridine. Photo courtesy of Cesar Lopez.



Guests enjoying “Songs of the Earth” and beautiful views of Land Trust lands. Photo courtesy of Cesar Lopez.

A special thank you to the tireless volunteers and artists, Nancy & Cesar Lopez, Elizabeth & Tom Archer, Janet & Lincoln from Donner Ski Ranch, Melanie Kauffman, Truckee Tahoe Community Foundation, Truckee Donner Chamber of Commerce, The Arts and Culture Council of Truckee Tahoe, For Goodness Sake, Atypical Design, The Cedar House Sport Hotel, North Tahoe Catering, True Blue Gaming, Tahoe Instant Press and Capital Beverage.

The Land Trust would like to thank the following for their generous financial support.

- The Braddock Foundation
- California Resources Agency – River Parkways Grant Program and California State Water Resources Control Board – Prop 40 Integrated Watershed Program
- Cal Trans Environmental Enhancement and Mitigation Program
- Community Foundation of Western Nevada
- Lahontan Community Foundation
- Mellam Family Foundation
- Patagonia
- Preserving Wild California – program of the Resources Legacy Fund Foundation REI, Inc.
- Teichert Foundation
- Truckee Tahoe Community Foundation
- Truckee Tahoe Community Foundation – Queen of Hearts Women’s Fund
- Wildlife Conservation Board

.....

Thank you to our 2008 Summer Hike Leaders

- Sagehen Meadows hike leaders: Kellie Wright and Stan Wingate;
- Bill and Judy Mayorga were scheduled to lead the hike.
- Waddle Ranch hike leader: David Brown
- Razorback Ridge hike leaders: John and Heather Svahn
- Hawk’s Peak hike leaders: John & Elizabeth Eaton
- Castle Valley to Summit Lake hike leader: Stan Wingate
- Pt. Mariah hike leader: Tam Lieberman

MEMBER PROFILE

Ed & Donna Henney

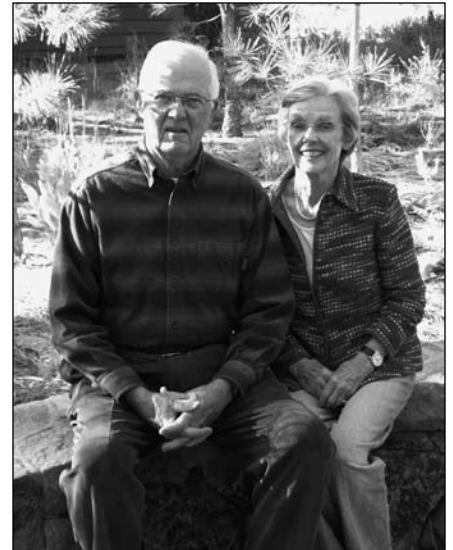
Truckee Donner Land Trust supporters Ed and Donna Henney have enjoyed Truckee's mountain air since the 1960's, when they first bought a home here. They have three children, five grandchildren and a brand new great grandchild.

Self-proclaimed mountain lovers, they have always felt a special connection to the Sierra and a profound love for the Truckee area. Ed is an avid golfer and Donna enjoys hikes through the Martis Valley.

Ed first heard about the Truckee Donner Land Trust during a visit to Waddle Ranch.

"What a beautiful piece of land," Ed said. "I just had to help protect the property for future generations."

Ed and Donna's seemingly inexhaustible passion and devotion to the area is evident the moment you meet them. Ed is an enthusiastic public speaker and passionate about the Land Trust's mission. He was a key fundraiser in the effort to save Waddle Ranch. We are grateful for Ed and Donna's dedication and willingness to help with fundraising.



Ed & Donna Henney...an inspiration to the Land Trust's Board and staff.

"We are always impressed with the dedication, enthusiasm and energy the Land Trust staff put into every project."

– Ed & Donna Henney

Buck for Open Space Partners

Preserving open space in the greater Truckee Donner region is simply good business. The Land Trust would like to thank the following conservation-minded businesses and their customers and encourage you to give them your business.

Please welcome Heat-Tech of Truckee and Kelly Brothers Painting, Inc. to the program!



Best Western Truckee Tahoe Inn
Robert Colpitts, DDS
Cottonwood Restaurant
Donner Truckee Veterinary Hospital
Dragonfly
Heat-Tech of Truckee
Kelly Brothers Painting, Inc.
Sierra Pet Clinic
SnowTech

Leave A Legacy of Open Space for Future Generations

The land under our feet ... hiking Schallenberger Ridge, skiing Coldstream Canyon, or enjoying the stunning views of the surrounding peaks from the Donner Lake Rim Trail.

Leave a legacy and help us protect open spaces for future generations by including the Truckee Donner Land Trust in your will or other estate plans.

Estate gifts may reduce your income taxes, reduce or eliminate capital gains taxes, reduce your gift or estate tax, provide income to you and your loved ones, and help support our efforts to protect our area's most important treasures.

Leaving a bequest is simple and gives you the opportunity to make a significant difference. To make a bequest, consult with your legal advisor or contact our office.

Consider including the Land Trust in your will or estate plan and leave a legacy that your children and grandchildren can experience under their feet forever.

Please call the Land Trust to find our more about planned giving. 530-582-4711.

GOVERNOR PRAISES NORTHERN SIERRA PARTNERSHIP

On Wednesday, October 8th, on the banks of Donner Lake, Governor Arnold Schwarzenegger praised the Northern Sierra Partnership, the Morgan Family Foundation and the David and Lucile Packard Foundation for their recent efforts to raise nearly \$25 million, funding geared to safeguard the most critical lands and waters of the northern Sierra. This announcement came during the launch of a public agency task force, headed up by the Sierra Nevada Conservancy. Citing the effectiveness of the Northern Sierra Partnership the Governor stressed the importance of public-private partnerships.

“This public-private partnership will benefit millions of Californians,” said Governor Schwarzenegger “By allowing us to preserve more open space, create new recreational opportunities, protect rivers and streams, address the effects of climate change, reduce the risk of wildfire and preserve the working ranches and farms of the Sierra Nevada.”

Ensuring the future of the northern Sierra is vital to the

future of California and Nevada. In fact, more than 65% of California’s population receives some portion of their water from the northern Sierra alone. The state of California’s new task force will coordinate government activities and bond fund expenditures with local private organizations, such as the Northern Sierra Partnership, all of whom share a common goal – protecting the natural, cultural and recreational resources of the Sierra Nevada.



2008 © Anne Chadwick

The Governor with Perry Norris, Truckee Donner Land Trust Executive Director, Peter Huber, Sierra County Supervisor, and Ruth Coleman, Director of State Parks. Photo courtesy of Anne Chadwick.

“This public-private partnership will benefit millions of Californians...”

– Governor Arnold Schwarzenegger



2008 © Anne Chadwick

Governor with leaders of the Partnership, Packard and Morgan Foundations, State agencies and local government gather at Donner Lake. Photo courtesy of Anne Chadwick.

The Truckee Donner Land Trust was founded in 1990 in order to preserve and protect important historic, recreational and scenic open spaces in the greater Truckee region.

Tel. 530-582-4711
Fax 530-582-5528
email: info@tdlandtrust.org
website: www.tdlandtrust.org

The Truckee Donner Land Trust is a 501 (c)(3) nonprofit organization. All donations to the Land Trust may be tax-deductible under the Internal Revenue Service Code.

BOARD OF DIRECTORS

Martin D. Bern, *President*
Noelle Allen Hetz, *Vice President*
William Thauvette, *Secretary/
Treasurer*

W. David Brown
Chris Fellows
William Goerke
Jeff Hamilton
J. Thomas Van Berkem
Janet Zipser Zipkin

ADVISORS

Gene Bowles
John Cobourn
Kathleen Eagan
Greg Faulkner
Bob Fink
Penny Fink
Ralph Hunt
Judy Mayorga
William McGlashan
Stephanie Olivieri
James L. Porter, Jr.
Craig Ritchey
Kathleen Ritchie

STAFF

Perry Norris, *Executive Director*
Stan Wingate, *Associate Director*
Kellie Wright, *Development Director*
Sara T. Jones, *Land Conservation Director*
John Svahn, *Trails and Access Director*
Carol Herrington, *Membership
Services Coordinator*

COVER PHOTO:

*Fall colors and the first snow;
maybe the best time of the year.*
Photo courtesy of Elizabeth Carmel -
www.thecarmelgallery.com.



Have you renewed
your 2008 membership?
Help protect more of the
open spaces you value. Call
530-582-4711 to give
by phone.

A mountain biker enjoys a new section of the Donner Lake Rim Trail east of Castle Valley on Donner Summit amidst old growth red fir.

Photo courtesy of Emma Gerrard.



This newsletter is printed on recycled paper using soy ink.



**TRUCKEE ❖ DONNER
L A N D T R U S T**

P.O. Box 8816
Truckee, CA 96162

ADDRESS SERVICE REQUESTED

NON-PROFIT ORG.
U.S. POSTAGE
PAID
TRUCKEE, CA
PERMIT #138